



**AZAD GOVT. OF THE STATE OF JAMMU & KASHMIR**  
(SECRETARIAT FORESTS, WILDLIFE & FISHERIES)  
**MUZAFFARABAD**



Muzaffarabad

Dated: 30.12.2009

**Notification**

No.S.F.W.F/ 07 (13)/ 2009. In exercise of the powers conferred by section 32 (4) of the Azad Jammu & Kashmir Wildlife Act -1975, the President of Azad Jammu & Kashmir is pleased to revise the boundaries of Machiara National Park specified in the schedule given below with immediate effect.

**SCHEDULE**

1) District	:	<b>Muzaffarabad</b>
2) Tehsil	:	<b>Nasirabad (Patikka)</b>
3) Locality	:	<b>Machiara National Park</b>
4) Area	:	<b>33450 acres</b>
5) Forest Compartments	:	<b>7, 8(a), 8(b), 9, 10, 11, 12, 13(a), 13(b), 13(c), 14, 15(a), 15(b)</b>
6) Coordinates	:	<b>73°30'45" to 73°45'55" E and 34°35'18" to 34°23'32" N</b>

**REFERENCE**

Satellite Image SPOT-5 (2.5 m)

1: 50,000 Surveys of Pakistan Maps

Spheroid &amp; Datum: World Geodetic System (WGS) 84

Projection: Geographic Coordinate System

**BOUNDARIES****North:**

It starts from a grid reference point N1 (73°31'3.216"; 34°34'12.3") at the Mansehra/Muzaffarabad district boundary and follows the boundary line to grid reference point N2 (73°36'37.26"; 34°34'57.18") in eastern direction reaching grid reference N3 (73°38'52.476"; 34°33'27.48") in south east direction. From here it moves further in southeast direction along the Neelum/Muzaffarabad districts boundary reaching grid reference N4 (73°42'35.352"; 34°31'18.18") and then travels in the eastern direction meeting grid reference N5 (73°45'43.704"; 34°31'5.58")

**East:**

From grid reference point E1 (73°45'43.704"; 34°31'5.58") it follows the Neelum/Muzaffarabad districts boundary towards southern direction ends up at grid reference point E2 (73°44'47.328"; 34°23'35.46").

**South:**

It starts from the grid reference point S1 (73°44'47.328"; 34°23'35.46") and runs along the extent of three union councils Serli Sacha, Machiara and Bheri respectively ending at grid reference point S17 (73°31'35.868"; 34°30'1.86"). (Grid reference points between point S1 and S17 are: S2

30/12/09

(73°43'24.636"; 34°23'43.14"); S3 (73°43'47.964"; 34°26'30.12"); S4 (73°39'43.668"; 34°28'24.18"); S5 (73°41'53.16"; 34°29'9.78"); S6 (73°38'56.436"; 34°29'45.6"); S7 (73°38'38.508"; 34°28'56.7"); S8 (73°37'34.176"; 34°28'1.38"); S9 (73°35'32.028"; 34°29'16.26"); S10 (73°36'42.084"; 34°30'23.04"); S11 (73°37'51.276"; 34°31'33.06"); S12 (73°36'14.364"; 34°31'33.06"); S13 (73°33'27.432"; 34°34'7.02"); S14 (73°31'49.728"; 34°32'16.26"); S15 (73°33'57.564"; 34°31'55.08"); S16 (73°33'7.884"; 34°30'9.18"). Major localities along the southern boundary includes Chunj Pahari, Jargi, Nakka, Khetar Lassi Danna, Chamkathaan, Jhugian, Panjnand, Miran di Gali, Chimian Khetar, Mohri, Machiara, Magri, Galikhetar, Shahkhori, Thora, Lower Sokar, Pathra, Seri, Bheri.

**West:**

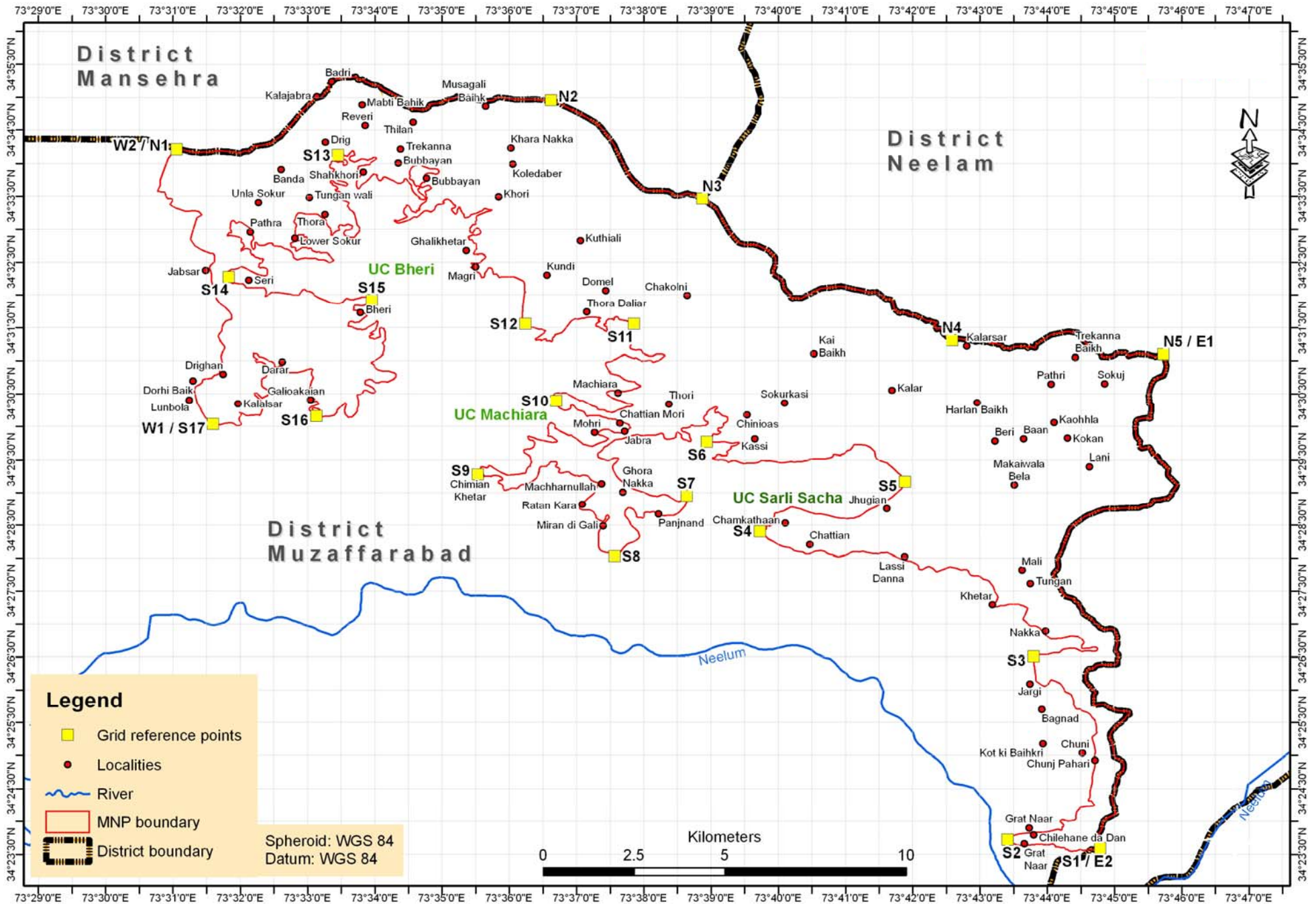
Western boundary starts form grid reference point W1 (73°31'35.863"; 34°30'1.86") and runs toward the northern side ending at grid reference point W2 (73°31'3.216"; 34°34'12.3").

  
30/12/09  
Section Officer  
Forests, Wildlife & Fisheries  
Ph # 05822-920123

**Copy to the:-**

- 1- Secretary to the President, Azad State of Jammu & Kashmir, Muzaffarabad.
- 2- Principal Secretary to the Prime Minister Azad Govt. of the State of the Jammu & Kashmir, Muzaffarabad.
- 3- Private Secretary to the Minister Wildlife & Fisheries, Azad Govt. of the State of the Jammu & Kashmir, Muzaffarabad.
- 4- Private Secretary to the Minister Forests Azad Govt. of the State of the Jammu & Kashmir, Muzaffarabad.
- 5- Private Secretary to the Chief Secretary Azad Govt. of the State of the Jammu & Kashmir, Muzaffarabad.
- 6- Private Secretary to the Additional Chief Secretary (Development), Azad Govt. of the State of the Jammu & Kashmir, Muzaffarabad
- 7- Private Secretary to the Senior Member Board of Revenue, Azad Govt. of the State of the Jammu & Kashmir, Muzaffarabad.
- 8- Private Secretary to the Secretary Forests, Wildlife & Fisheries Azad Govt. of the State of the Jammu & Kashmir, Muzaffarabad
- 9- Chief Conservator of Forests, Azad Govt. of the State of the Jammu & Kashmir, Muzaffarabad.
- 10- Director Wildlife & Fisheries, Azad Govt. of the State of the Jammu & Kashmir, Muzaffarabad.
- 11- Accountant General, Azad Govt. of the State of the Jammu & Kashmir, Muzaffarabad.
- 12- Controller Government Printing Press Muzaffarabad.
- 13- Master File.

  
30/12/09  
Section Officer  
Forests, Wildlife & Fisheries



GIS map (with Grid) of the Protected Area showing extent of boundary with GPS coordinates

## List of MNP Boundary Coordinates

No	Latitude	Longitude	No	Latitude	Longitude
1	34°31'56.676"	73°33'35.1"	43	34°30'12.168"	73°31'59.76"
2	34°31'55.848"	73°33'57.66"	44	34°30'0.576"	73°31'59.34"
3	34°31'50.448"	73°33'42.3"	45	34°30'2.628"	73°31'46.2"
4	34°31'45.84"	73°33'41.1"	46	34°30'2.808"	73°31'33.96"
5	34°31'40.872"	73°33'52.62"	47	34°30'36.18"	73°31'19.98"
6	34°31'31.224"	73°33'36.48"	48	34°30'42.768"	73°31'26.58"
7	34°31'35.544"	73°34'2.52"	49	34°30'58.608"	73°31'43.68"
8	34°31'25.104"	73°33'56.7"	50	34°31'21.828"	73°31'40.14"
9	34°31'23.736"	73°33'58.44"	51	34°31'38.712"	73°31'52.44"
10	34°31'22.08"	73°33'55.2"	52	34°32'24.936"	73°31'32.64"
11	34°31'29.748"	73°34'5.7"	53	34°32'37.536"	73°31'35.94"
12	34°31'15.816"	73°34'6.9"	54	34°32'50.352"	73°31'15.6"
13	34°31'15.672"	73°34'6.9"	55	34°33'9.972"	73°31'21.18"
14	34°31'4.944"	73°34'6.9"	56	34°33'15.768"	73°31'23.1"
15	34°30'58.356"	73°33'56.88"	57	34°33'22.32"	73°30'57.48"
16	34°30'47.592"	73°34'18.96"	58	34°33'26.892"	73°30'59.58"
17	34°30'41.868"	73°33'51.84"	59	34°33'33.768"	73°30'52.26"
18	34°30'30.888"	73°33'59.94"	60	34°33'34.452"	73°30'46.32"
19	34°30'32.94"	73°33'50.82"	61	34°34'13.044"	73°31'1.86"
20	34°30'28.584"	73°33'44.1"	62	34°34'10.092"	73°31'27"
21	34°30'8.136"	73°33'36.24"	63	34°34'9.588"	73°31'55.08"
22	34°30'21.42"	73°33'33.18"	64	34°34'15.708"	73°32'15.54"
23	34°30'8.388"	73°33'8.22"	65	34°34'26.904"	73°32'38.04"
24	34°30'11.052"	73°33'9.24"	66	34°34'45.552"	73°32'53.52"
25	34°30'12.312"	73°33'6.48"	67	34°35'10.608"	73°33'18.9"
26	34°30'15.516"	73°33'10.5"	68	34°35'18.6"	73°33'43.26"
27	34°30'16.992"	73°33'5.52"	69	34°34'58.944"	73°34'23.1"
28	34°30'16.128"	73°33'1.5"	70	34°34'48.828"	73°34'33.66"
29	34°30'25.128"	73°33'6"	71	34°34'53.832"	73°34'49.8"
30	34°30'29.556"	73°32'59.28"	72	34°35'0.708"	73°35'13.2"
31	34°30'46.944"	73°33'3.54"	73	34°35'0.168"	73°35'23.34"
32	34°30'47.052"	73°33'3.6"	74	34°35'0.312"	73°35'52.44"
33	34°30'50.508"	73°32'56.58"	75	34°34'57.432"	73°36'25.92"
34	34°30'49.716"	73°32'39.78"	76	34°34'45.696"	73°37'1.62"
35	34°30'54.144"	73°32'30.9"	77	34°33'51.012"	73°37'45.54"
36	34°31'6.24"	73°32'11.64"	78	34°33'35.1"	73°38'2.76"
37	34°30'58.392"	73°32'14.52"	79	34°33'30.42"	73°38'27.42"
38	34°30'51.408"	73°32'24.9"	80	34°33'27.216"	73°38'52.68"
39	34°30'40.68"	73°32'18.96"	81	34°32'45.852"	73°39'37.44"
40	34°30'32.364"	73°32'25.8"	82	34°32'27.6"	73°39'57.42"
41	34°30'30.024"	73°32'12.54"	83	34°32'19.212"	73°39'55.38"
42	34°30'9.972"	73°32'17.04"	84	34°31'57.504"	73°40'11.28"

No	Latitude	Longitude	No	Latitude	Longitude
85	34°32'5.82"	73°40'37.74"	127	34°24'19.512"	73°44'36.78"
86	34°32'2.112"	73°41'21.06"	128	34°24'59.004"	73°44'42.24"
87	34°31'55.704"	73°41'40.8"	129	34°24'59.076"	73°44'42.12"
88	34°31'43.428"	73°41'47.1"	130	34°25'20.28"	73°44'44.04"
89	34°31'31.764"	73°42'18.66"	131	34°25'57.288"	73°44'17.58"
90	34°31'26.004"	73°42'32.28"	132	34°26'8.556"	73°43'49.74"
91	34°31'17.796"	73°42'35.34"	133	34°26'30.84"	73°43'47.46"
92	34°31'16.932"	73°43'6.42"	134	34°26'36.456"	73°44'44.7"
93	34°31'10.416"	73°43'26.22"	135	34°26'48.516"	73°44'24.6"
94	34°31'14.916"	73°43'50.22"	136	34°27'3.564"	73°43'38.58"
95	34°31'25.284"	73°44'27"	137	34°27'13.464"	73°43'42.24"
96	34°31'3.252"	73°44'50.16"	138	34°27'16.704"	73°43'9.6"
97	34°31'3.792"	73°45'12.48"	139	34°27'40.68"	73°43'3.36"
98	34°31'6.636"	73°45'44.1"	140	34°27'47.448"	73°42'21.96"
99	34°31'6.492"	73°45'44.28"	141	34°28'4.836"	73°41'37.74"
100	34°30'46.152"	73°45'43.38"	142	34°28'1.2"	73°40'54.9"
101	34°30'33.192"	73°45'31.56"	143	34°28'6.708"	73°40'14.16"
102	34°30'7.236"	73°45'32.4"	144	34°28'28.56"	73°39'44.7"
103	34°30'3.672"	73°45'18.84"	145	34°28'40.224"	73°39'56.76"
104	34°29'40.2"	73°45'23.04"	146	34°28'45.12"	73°40'18.48"
105	34°29'40.704"	73°45'31.08"	147	34°28'42.492"	73°41'18.72"
106	34°29'6.576"	73°45'55.8"	148	34°29'8.916"	73°41'53.34"
107	34°28'53.256"	73°45'36.84"	149	34°29'43.476"	73°41'8.82"
108	34°28'44.94"	73°44'57.06"	150	34°29'31.452"	73°40'46.32"
109	34°28'27.336"	73°44'20.82"	151	34°29'27.384"	73°40'0.84"
110	34°27'49.752"	73°44'9.42"	152	34°29'31.452"	73°39'1.5"
111	34°27'7.668"	73°44'33.9"	153	34°29'44.952"	73°39'24.96"
112	34°26'53.88"	73°45'0.18"	154	34°29'44.88"	73°38'55.74"
113	34°26'23.784"	73°45'1.92"	155	34°29'53.952"	73°39'8.28"
114	34°26'9.312"	73°44'34.14"	156	34°30'8.172"	73°39'14.58"
115	34°25'45.372"	73°44'42.06"	157	34°30'17.712"	73°39'5.1"
116	34°25'37.308"	73°45'13.32"	158	34°30'2.16"	73°38'57"
117	34°25'17.508"	73°44'55.86"	159	34°29'58.596"	73°38'35.16"
118	34°24'41.364"	73°45'3.48"	160	34°29'46.428"	73°38'41.7"
119	34°24'6.588"	73°45'1.32"	161	34°29'54.744"	73°38'30.3"
120	34°23'35.448"	73°44'46.26"	162	34°29'48.912"	73°38'26.88"
121	34°23'38.616"	73°44'2.28"	163	34°29'33.648"	73°37'18.72"
122	34°23'43.368"	73°43'25.02"	164	34°29'30.408"	73°37'37.38"
123	34°23'52.08"	73°44'12.72"	165	34°28'56.784"	73°38'8.52"
124	34°24'0.756"	73°44'12.12"	166	34°28'59.52"	73°38'37.68"
125	34°24'14.508"	73°44'42.06"	167	34°28'36.372"	73°37'58.98"
126	34°24'19.188"	73°44'36.78"	168	34°28'45.984"	73°37'47.82"

No	Latitude	Longitude	No	Latitude	Longitude
169	34°28'5.016"	73°37'29.16"	211	34°32'16.044"	73°36'5.46"
170	34°28'38.748"	73°37'28.32"	212	34°32'19.356"	73°35'48.06"
171	34°28'44.976"	73°37'2.88"	213	34°32'24.792"	73°35'41.94"
172	34°29'7.908"	73°37'19.32"	214	34°32'15.936"	73°35'35.82"
173	34°29'18.06"	73°36'45.24"	215	34°32'29.652"	73°35'26.4"
174	34°29'25.872"	73°36'42.36"	216	34°32'35.52"	73°35'38.58"
175	34°29'22.776"	73°36'27.24"	217	34°32'37.824"	73°35'28.14"
176	34°29'4.056"	73°36'3.24"	218	34°32'47.328"	73°35'28.02"
177	34°29'12.696"	73°35'53.82"	219	34°33'0.576"	73°35'31.2"
178	34°29'23.244"	73°35'34.44"	220	34°32'58.272"	73°35'24.6"
179	34°29'24.648"	73°35'42.42"	221	34°33'16.992"	73°35'44.04"
180	34°29'22.956"	73°36'16.56"	222	34°33'10.656"	73°35'19.92"
181	34°29'36.78"	73°36'13.02"	223	34°33'13.752"	73°35'12.54"
182	34°29'49.092"	73°36'16.92"	224	34°33'17.784"	73°35'8.4"
183	34°29'46.068"	73°36'42.48"	225	34°33'21.564"	73°35'11.76"
184	34°30'2.232"	73°36'39.36"	226	34°33'27.36"	73°35'3.96"
185	34°29'43.512"	73°37'18.12"	227	34°33'21.78"	73°34'55.8"
186	34°29'48.156"	73°37'27.9"	228	34°33'9.324"	73°34'32.7"
187	34°29'57.264"	73°37'26.04"	229	34°33'8.064"	73°34'17.94"
188	34°29'55.86"	73°37'45.72"	230	34°33'11.124"	73°34'28.62"
189	34°30'9.648"	73°37'10.62"	231	34°33'11.34"	73°34'28.68"
190	34°30'19.404"	73°36'55.98"	232	34°33'21.78"	73°34'29.04"
191	34°30'14.616"	73°36'50.04"	233	34°33'15.012"	73°34'37.02"
192	34°30'29.052"	73°36'39.78"	234	34°33'26.028"	73°34'45.84"
193	34°30'18.972"	73°37'13.56"	235	34°33'37.836"	73°34'50.22"
194	34°30'18.864"	73°37'49.68"	236	34°33'38.952"	73°34'40.62"
195	34°30'29.952"	73°37'26.82"	237	34°33'52.128"	73°34'57.06"
196	34°30'36.432"	73°37'56.88"	238	34°33'56.232"	73°34'33"
197	34°30'58.068"	73°37'26.22"	239	34°33'45.828"	73°34'31.14"
198	34°31'5.16"	73°37'42.72"	240	34°33'27.684"	73°34'45.3"
199	34°31'4.476"	73°38'18.48"	241	34°33'45.936"	73°34'27.18"
200	34°31'11.244"	73°37'47.52"	242	34°33'49.644"	73°34'1.5"
201	34°31'31.836"	73°37'51.3"	243	34°33'36.864"	73°33'45.54"
202	34°31'39.684"	73°37'35.64"	244	34°33'51.84"	73°33'48.42"
203	34°31'26.544"	73°37'26.58"	245	34°33'56.952"	73°33'45.6"
204	34°31'26.58"	73°37'26.1"	246	34°34'5.376"	73°34'0.9"
205	34°31'32.124"	73°37'17.1"	247	34°34'4.368"	73°33'37.26"
206	34°31'38.388"	73°37'21.12"	248	34°34'10.668"	73°33'40.5"
207	34°31'17.148"	73°36'37.86"	249	34°34'8.868"	73°33'25.38"
208	34°31'19.092"	73°36'23.16"	250	34°34'3.432"	73°33'33.36"
209	34°31'26.976"	73°36'31.92"	251	34°34'2.28"	73°33'22.38"
210	34°31'33.024"	73°36'12.42"	252	34°33'54.18"	73°33'23.76"

No	Latitude	Longitude	No	Latitude	Longitude
253	34°33'40.608"	73°33'35.52"	271	34°32'47.796"	73°32'13.38"
254	34°33'44.1"	73°33'20.7"	272	34°32'41.46"	73°32'11.88"
255	34°33'33.048"	73°33'29.88"	273	34°32'51.504"	73°32'11.88"
256	34°33'28.908"	73°33'27.9"	274	34°32'59.028"	73°32'9.12"
257	34°33'14.94"	73°33'41.1"	275	34°33'5.364"	73°31'56.04"
258	34°32'53.016"	73°33'42.3"	276	34°32'54.276"	73°31'48.42"
259	34°32'56.328"	73°33'32.4"	277	34°32'40.236"	73°32'0.18"
260	34°33'2.124"	73°33'39.78"	278	34°32'32.892"	73°32'20.34"
261	34°32'59.496"	73°33'28.38"	279	34°32'25.98"	73°32'16.44"
262	34°32'54.6"	73°33'21.24"	280	34°32'18.384"	73°32'23.58"
263	34°33'14.508"	73°32'53.7"	281	34°32'25.98"	73°32'1.68"
264	34°33'6.876"	73°32'47.82"	282	34°32'15.18"	73°31'47.88"
265	34°32'54.672"	73°32'49.02"	283	34°32'6.936"	73°32'4.74"
266	34°32'52.008"	73°32'59.82"	284	34°32'6.648"	73°32'21.12"
267	34°32'46.968"	73°32'45.24"	285	34°31'58.8"	73°32'22.74"
268	34°32'39.696"	73°32'49.56"	286	34°32'0.096"	73°32'52.68"
269	34°32'32.172"	73°33'23.1"	287	34°32'4.956"	73°32'56.88"
270	34°32'32.208"	73°32'50.82"			