

**GOVERNMENT OF SINDH
WILDLIFE & FOREST DEPARTMENT**

Dated: 28-08-2009

**Khirthar Protected Areas Complex
PART – IV: Hothiano-Eri-Sumbak-Surjan Game Reserve**

NOTIFICATION

No. WL & FT (DCF GEN-1374)/76

In exercise of the powers conferred by section 16 of the Sindh Wildlife Protection Ordinance, 1972 (Sindh Ordinance V of 1972) the Government of Sindh is pleased to revise the boundaries of the Khirthar Protected Areas Complex specified in the schedule given below with immediate effect.

SCHEDULE

- 1) District(s)** : Jamshoro & Thatta
- 2) Tehsil(s)** : Thano Bulla Khan, Kotri, Thatta
- 3) Locality** : Kohistan Tract
- 4) Area** : 30,103 hectare
- 5) Coordinates** : 67° 48' 05.20" to 67° 57' 03.12" E and 25° 12' 14.86" to 25° 49' 02.76" N

BOUNDARIES

North:

Northern boundary follows grid reference point N1 (67° 51' 25.40", 25° 48' 46.41") at the Geran Lak and moves in eastern direction following the track from Geran Lak and then a tributary of Moe Sand Dhoro up to the grid reference point N2 (67° 52' 50.22", 25° 48' 56.61"). This is the common boundary line for Khirthar National Park and Hothiani-Eri-Sumbak-Surjan Game Reserve.

East:

Eastern boundary starts from grid reference point E1 (67° 52' 50.22", 25° 48' 56.61") and moves in southern direction following the eastern foothills of Hothiano, Narero, Eri, Sumbak and Surjan up to the grid reference point E10. E10 is the southern end of Surjan Hill. {Grid reference points between E1 and E10 are; E2 (67° 54' 35.53", 25° 44' 06.09"), E3 (67° 55' 21.48", 25° 39' 45.29"), E4 (67° 54' 31.08", 25° 32' 30.38"), E5 (67° 56' 28.00", 25° 29' 51.48"), E6 (67° 56' 58.41", 25° 24' 45.24"), E7 (67° 55' 32.75", 25° 21' 59.92"), E8 (67° 56' 22.86", 25° 19' 25.31"), and E9 (67° 53' 31.56", 25° 17' 02.68")}.}

South:

Southern corner of the Game Reserve is at the end of Surjan Hill at the grid reference point S1 (67° 48' 16.76", 25° 12' 18.07").

West:

Starting from the grid reference point W1 (67° 48' 16.76", 25° 12' 18.07") the boundary moves along the western foothills of Surjan, Sumbak, Eri, Narero and Hothiano up to grid reference point W10 (67° 51' 25.40", 25° 48' 46.41") at Geran Lak. {Grid reference points between W1 and W10 are; W2 (67° 51' 16.04", 25° 18' 11.34"), W3 (67° 52' 21.39", 25° 21' 04.53"), W4 (67° 54' 30.46", 25° 25' 09.60"), W5 (67° 54' 20.11", 25° 29' 29.78"), W6 (67° 52' 14.00", 25° 31' 21.71"), W7 (67° 53' 18.44", 25° 38' 38.01"), W8 (67° 52' 18.22", 25° 43' 28.98") and W9 (67° 51' 26.79", 25° 47' 12.25")}. From W9 to W10, Hothiano-Eri-Sumbak-Surjan Game Reserve and Khirthar National Park have common boundary line.

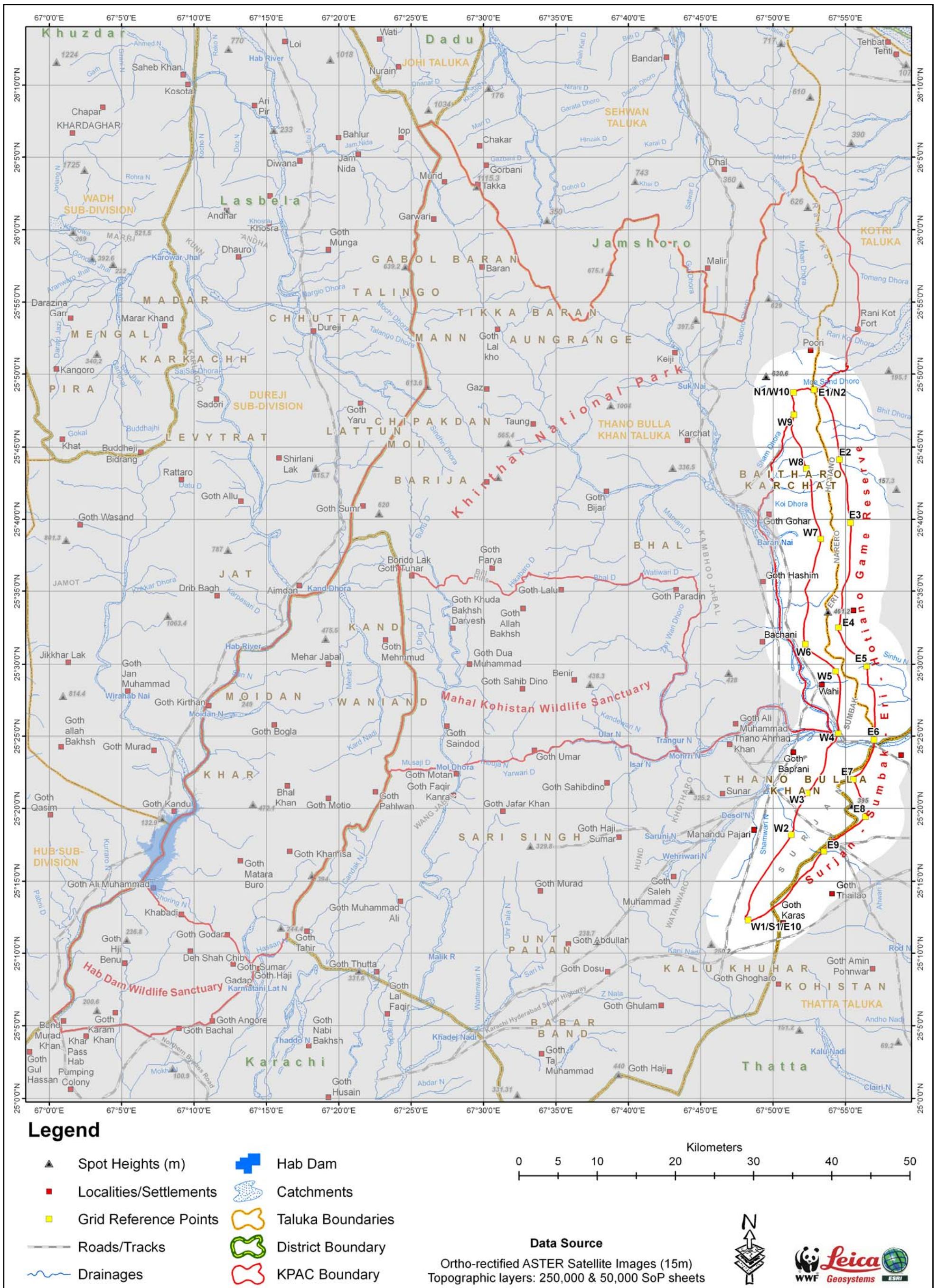
REFERENCE

Ortho-rectified ASTER (15 m) Satellite Images
1:250,000 and 1:50,000 Survey of Pakistan Maps
Projection: Geographic Coordinate System
Spheroid & Datum: World Geodetic System (WGS) 84
(Single frequency GPS receiver was used for the field data collection)

(Authority)
Government of Sindh

A copy is forwarded to:-

1. _____
2. _____
3. _____
4. _____



List of selective boundary coordinates

No.	Longitude	Latitude	No.	Longitude	Latitude
1	67° 48' 05.84"	25° 12' 32.85"	69	67° 55' 17.50"	25° 36' 29.52"
2	67° 48' 12.91"	25° 12' 39.92"	70	67° 55' 14.93"	25° 36' 08.96"
3	67° 48' 21.21"	25° 13' 02.54"	71	67° 54' 51.81"	25° 35' 17.56"
4	67° 48' 19.58"	25° 13' 25.41"	72	67° 54' 44.95"	25° 34' 48.44"
5	67° 48' 37.56"	25° 14' 19.33"	73	67° 54' 46.89"	25° 34' 04.13"
6	67° 49' 55.98"	25° 16' 18.60"	74	67° 54' 40.50"	25° 33' 35.49"
7	67° 51' 04.60"	25° 17' 51.73"	75	67° 54' 37.03"	25° 32' 51.25"
8	67° 51' 16.04"	25° 18' 11.34"	76	67° 54' 29.79"	25° 32' 25.24"
9	67° 51' 25.84"	25° 18' 34.21"	77	67° 54' 30.88"	25° 32' 16.00"
10	67° 51' 25.84"	25° 18' 58.72"	78	67° 54' 41.45"	25° 31' 57.57"
11	67° 51' 43.81"	25° 19' 57.54"	79	67° 54' 55.23"	25° 31' 24.56"
12	67° 51' 56.88"	25° 20' 17.15"	80	67° 55' 14.78"	25° 30' 57.99"
13	67° 52' 06.69"	25° 20' 44.92"	81	67° 55' 32.89"	25° 30' 45.14"
14	67° 52' 42.63"	25° 21' 27.40"	82	67° 56' 02.73"	25° 30' 29.17"
15	67° 52' 58.97"	25° 21' 55.17"	83	67° 56' 19.87"	25° 30' 10.33"
16	67° 53' 25.49"	25° 22' 31.43"	84	67° 56' 31.00"	25° 29' 38.21"
17	67° 53' 35.03"	25° 22' 58.25"	85	67° 56' 33.14"	25° 28' 35.67"
18	67° 53' 44.72"	25° 24' 10.79"	86	67° 56' 35.71"	25° 28' 30.10"
19	67° 54' 17.40"	25° 24' 40.19"	87	67° 56' 52.85"	25° 28' 16.40"
20	67° 54' 30.46"	25° 25' 09.60"	88	67° 57' 00.13"	25° 27' 55.41"
21	67° 54' 30.46"	25° 25' 35.75"	89	67° 57' 02.27"	25° 27' 34.00"
22	67° 54' 25.56"	25° 26' 00.25"	90	67° 57' 00.13"	25° 26' 41.32"
23	67° 54' 35.37"	25° 27' 21.95"	91	67° 57' 03.12"	25° 25' 42.64"
24	67° 54' 38.60"	25° 28' 24.83"	92	67° 56' 58.26"	25° 25' 04.92"
25	67° 54' 33.82"	25° 29' 03.22"	93	67° 56' 58.41"	25° 24' 22.55"
26	67° 54' 11.55"	25° 29' 44.34"	94	67° 56' 53.70"	25° 24' 02.84"
27	67° 54' 03.84"	25° 29' 52.05"	95	67° 56' 35.29"	25° 23' 18.73"
28	67° 53' 41.00"	25° 30' 10.39"	96	67° 56' 10.44"	25° 22' 35.90"
29	67° 52' 29.42"	25° 30' 56.44"	97	67° 56' 01.88"	25° 22' 25.19"
30	67° 52' 14.00"	25° 31' 21.71"	98	67° 55' 37.46"	25° 22' 11.06"
31	67° 52' 08.86"	25° 31' 36.70"	99	67° 55' 32.33"	25° 22' 02.92"
32	67° 52' 09.29"	25° 32' 49.52"	100	67° 55' 52.02"	25° 21' 17.95"
33	67° 52' 21.04"	25° 33' 31.34"	101	67° 55' 56.74"	25° 20' 59.96"
34	67° 52' 26.18"	25° 34' 07.32"	102	67° 56' 07.44"	25° 20' 38.54"
35	67° 52' 22.76"	25° 34' 33.02"	103	67° 56' 08.73"	25° 20' 06.42"
36	67° 52' 15.05"	25° 34' 53.58"	104	67° 56' 23.29"	25° 19' 28.30"
37	67° 52' 13.34"	25° 35' 06.42"	105	67° 56' 16.44"	25° 19' 16.74"
38	67° 52' 38.18"	25° 36' 01.25"	106	67° 55' 56.51"	25° 18' 55.98"
39	67° 52' 57.02"	25° 37' 19.20"	107	67° 55' 05.12"	25° 18' 24.23"
40	67° 53' 11.58"	25° 37' 59.46"	108	67° 54' 30.26"	25° 17' 58.79"
41	67° 53' 18.44"	25° 38' 38.01"	109	67° 53' 59.00"	25° 17' 45.08"
42	67° 53' 10.73"	25° 39' 24.26"	110	67° 53' 31.56"	25° 17' 02.68"
43	67° 52' 52.74"	25° 40' 05.38"	111	67° 53' 11.33"	25° 16' 44.70"
44	67° 52' 44.17"	25° 40' 40.50"	112	67° 52' 52.07"	25° 16' 14.87"
45	67° 52' 38.46"	25° 42' 33.11"	113	67° 52' 41.45"	25° 15' 52.01"
46	67° 52' 29.15"	25° 43' 09.15"	114	67° 51' 53.91"	25° 15' 14.10"
47	67° 52' 09.31"	25° 43' 50.44"	115	67° 51' 25.24"	25° 14' 38.77"
48	67° 52' 03.24"	25° 44' 10.28"	116	67° 50' 52.51"	25° 13' 49.91"

49	67° 51' 55.54"	25° 44' 57.65"	117	67° 50' 29.75"	25° 13' 28.74"
50	67° 51' 25.37"	25° 45' 42.88"	118	67° 50' 04.05"	25° 13' 12.04"
51	67° 51' 16.80"	25° 46' 10.30"	119	67° 49' 22.93"	25° 12' 38.63"
52	67° 51' 18.51"	25° 46' 35.99"	120	67° 48' 30.90"	25° 12' 14.86"
53	67° 51' 26.79"	25° 47' 12.25"	121	67° 48' 23.19"	25° 12' 14.86"
54	67° 52' 54.33"	25° 48' 54.63"	122	67° 48' 08.41"	25° 12' 20.00"
55	67° 53' 17.58"	25° 48' 45.34"	123	67° 48' 05.20"	25° 12' 22.57"
56	67° 53' 41.56"	25° 48' 11.93"	124	67° 48' 05.84"	25° 12' 32.85"
57	67° 54' 04.69"	25° 47' 18.82"	125	67° 51' 26.79"	25° 47' 12.25"
58	67° 54' 28.68"	25° 45' 15.47"	126	67° 51' 30.50"	25° 47' 18.11"
59	67° 54' 38.96"	25° 43' 42.10"	127	67° 51' 23.65"	25° 47' 40.80"
60	67° 54' 42.38"	25° 43' 27.54"	128	67° 51' 26.23"	25° 48' 03.01"
61	67° 54' 57.80"	25° 43' 03.55"	129	67° 51' 17.60"	25° 48' 31.58"
62	67° 55' 01.23"	25° 42' 54.13"	130	67° 51' 19.58"	25° 48' 43.62"
63	67° 55' 07.23"	25° 42' 24.15"	131	67° 51' 44.38"	25° 48' 56.20"
64	67° 55' 07.23"	25° 41' 20.76"	132	67° 52' 13.31"	25° 48' 59.62"
65	67° 55' 11.51"	25° 40' 37.93"	133	67° 52' 20.50"	25° 49' 02.76"
66	67° 55' 17.50"	25° 40' 13.95"	134	67° 52' 37.26"	25° 48' 55.91"
67	67° 55' 23.50"	25° 39' 31.12"	135	67° 52' 54.33"	25° 48' 54.63"
68	67° 55' 18.36"	25° 38' 05.46"			