

**GOVERNMENT OF SINDH  
WILDLIFE & FOREST DEPARTMENT**

Dated: 28-08-2009

**Khirthar Protected Areas Complex  
PART – II: Mahal Kohistan Wildlife Sanctuary****NOTIFICATION**

No. WL &amp; FT (SOI-DCF-992)/74

In exercise of the powers conferred by section 14 of the Sindh Wildlife Protection Ordinance, 1972 (Sindh Ordinance V of 1972) the Government of Sindh is pleased to revise the boundaries of the Khirthar Protected Areas Complex specified in the schedule given below with immediate effect.

**SCHEDULE**

- 1) **District(s)** : Jamshoro
- 2) **Tehsil(s)** : Thano Bulla Khan
- 3) **Locality** : Mahal Kohistan
- 4) **Area** : 71,866 hectare
- 5) **Coordinates** : 67° 23' 13.36" to 67° 45' 01.17" E and 25° 22' 31.61" to 25° 36' 37.93" N

**BOUNDARIES****North:**

North-western corner of the Mahal Koshistan Wildlife Sanctuary lies at the grid reference point N1 (67° 24' 08.17", 25° 36' 37.93") at Borido Lak. From N1 the boundary moves along the track to Borido Lak and then follows tributary of Drig Dhoru up to grid reference point N2 (67° 26' 14.68", 25° 35' 39.44"). N2 is on the center line of Drig Dhoru. From N2, it shifts in south-eastern direction and reaches grid reference point N3 (67° 26' 45.69", 25° 35' 15.48") at the centre line of Mol Dhoru. From N3 it runs along Mosaro Dhoru (a tributary of Mol Dhoru) up to grid reference point N4 (67° 28' 10.33", 25° 36' 05.09"). From N4 it follows tops of Bill Hills to the grid reference point N5 (67° 31' 48.74", 25° 34' 44.35"). From N5 it follows Hikabaro Dhoru up to grid reference point N6 (67° 34' 13.28", 25° 35' 58.62"). From N6 to grid reference point N8 (67° 40' 55.03", 25° 36' 14.76") the boundary line follows a tributary (of Bhal Dhoru) and then moves along Bhal Dhoru. {Grid reference point between N6 and N8 is; N7 (67° 37' 50.99", 25° 35' 49.27")}. From N8 to N9 (67° 44' 31.18", 25° 35' 59.08"), it follows Watiwari Dhoru (a tributary of Bhal Dhoru). N9 is the north-eastern corner of the Mahal Kohistan Wildlife Sanctuary. Mahal Kohistan Wildlife Sanctuary and Khirthar National Park have a common boundary from the grid reference point N1 to N5.

**East:**

Eastern side of the boundary starts from grid reference point E1 (67° 44' 31.18", 25° 35' 59.08") and follows the foothills of Kambhoo Jabal in southern direction up to grid reference point E2 (67° 44' 57.31", 25° 33' 31.49"). From

E2 it moves in south-western direction along Zay Wari Dhoro (A tributary of Trangur Nadi) up to grid reference point E3 (67° 43' 44.07", 25° 30' 34.81"). From E3, it follows Trangur Nadi up to grid reference point E5 (67° 43' 24.75", 25° 24' 00.53") which is the junction of Trangur Nadi and Isar Nadi. Grid reference point between E3 and E5 is; E4 (67° 42' 15.81", 25° 27' 23.23"). Mahal Kohistan Wildlife Sanctuary and Khirthar National Park have a common boundary from the grid reference point E1 to E5.

**South:**

Grid reference point S1 (67° 43' 24.75", 25° 24' 00.53") is at the south-eastern corner of the Mahal Kohistan Wildlife Sanctuary. From S1 it follows Isar Nadi up to the grid reference point S4 (67° 33' 34.14", 25° 23' 54.26"). {Grid reference points between S1 and S4 are; S2 (67° 40' 47.16", 25° 23' 39.65") and S3 (67° 37' 10.61", 25° 24' 40.04")}. From S4 it follows Yarwari Dhoro and moves in western direction up to grid reference point S6 (67° 29' 41.19", 25° 23' 16.89") passing by grid reference point S5 (67° 31' 44.97", 25° 23' 20.32"). From S6 it follows a tributary of Mol Dhoro and reaches grid reference point S7 (67° 28' 04.99", 25° 22' 42.63"). S7 lies at the center of Mol Dhoro. From S7, it extends in western direction following Musaji Dhoro (a tributary of Mol Dhoro) and touches the boundary line of Karachi District at the grid reference point S9 (67° 23' 23.42", 25° 22' 31.60"). {Grid reference point between S9 and S7 is; S8 (67° 25' 50.08", 25° 22' 39.63")}.  
**West:**  
From W1 (67° 23' 23.42", 25° 22' 31.60"), it follows the boundary line of Karachi District in northern direction up to grid reference point W4 (67° 24' 08.17", 25° 36' 37.93"). {Grid reference points between W1 and W4 are; W2 (67° 25' 19.28", 25° 28' 05.64") and W3 (67° 24' 24.45", 25° 32' 59.45")}. From W1 to W4, Mahal Kohistan Wildlife Sanctuary and Khirthar National Park have a common boundary line.

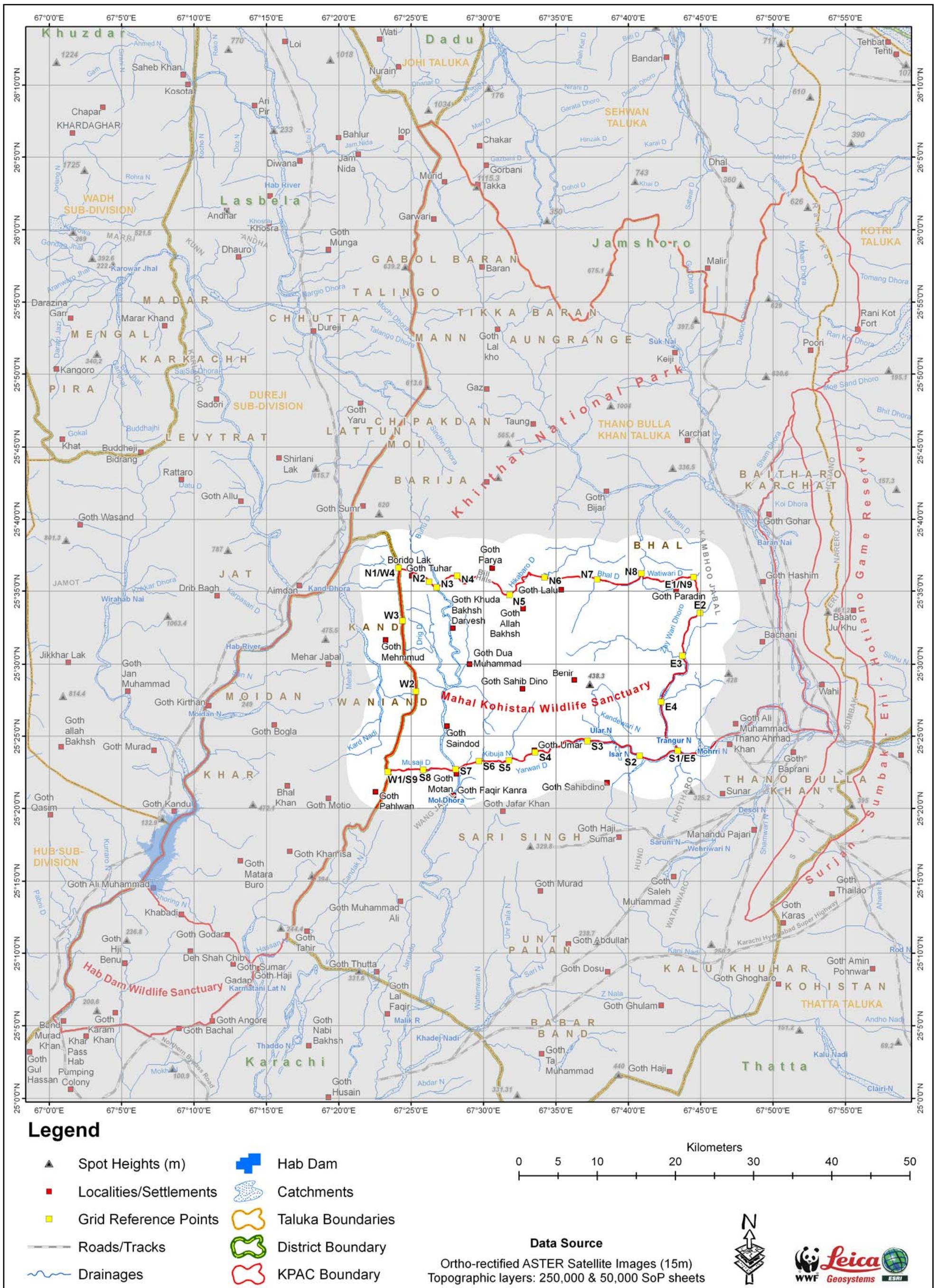
**REFERENCE**

Ortho-rectified ASTER (15 m) Satellite Images  
1: 250,000 and 1: 50,000 Survey of Pakistan Maps  
Projection: Geographic Coordinate System  
Spheroid & Datum: World Geodetic System (WGS) 84  
(Single frequency GPS receiver was used for the field data collection)

**(Authority)**  
**Government of Sindh**

**A copy is forwarded to:-**

1. \_\_\_\_\_
2. \_\_\_\_\_
3. \_\_\_\_\_



Map Page: GIS map of the Khirthar Protected Areas Complex - Part-II: Mahal Kohistan Wildlife Sanctuary

## List of selective boundary coordinates

No.	Longitude	Latitude	No.	Longitude	Latitude
1	67° 43' 24.75"	25° 24' 00.53"	112	67° 27' 05.42"	25° 35' 26.04"
2	67° 42' 52.60"	25° 23' 57.44"	113	67° 27' 15.64"	25° 35' 22.87"
3	67° 42' 33.81"	25° 23' 39.22"	114	67° 27' 19.87"	25° 35' 29.92"
4	67° 42' 05.97"	25° 23' 23.81"	115	67° 27' 19.16"	25° 35' 41.20"
5	67° 41' 52.26"	25° 23' 20.38"	116	67° 27' 22.23"	25° 35' 49.42"
6	67° 41' 38.56"	25° 23' 20.38"	117	67° 27' 27.93"	25° 35' 55.80"
7	67° 41' 02.15"	25° 23' 31.52"	118	67° 27' 44.77"	25° 36' 05.09"
8	67° 40' 35.17"	25° 23' 46.51"	119	67° 28' 10.33"	25° 36' 05.09"
9	67° 40' 12.47"	25° 23' 52.07"	120	67° 28' 23.11"	25° 35' 45.34"
10	67° 40' 08.62"	25° 24' 18.20"	121	67° 28' 34.15"	25° 35' 32.56"
11	67° 40' 00.05"	25° 24' 23.34"	122	67° 28' 38.79"	25° 35' 30.82"
12	67° 39' 31.78"	25° 24' 16.49"	123	67° 28' 48.09"	25° 35' 32.56"
13	67° 39' 07.37"	25° 24' 32.34"	124	67° 28' 59.12"	25° 35' 55.22"
14	67° 38' 53.66"	25° 24' 37.47"	125	67° 29' 19.46"	25° 35' 57.54"
15	67° 38' 22.39"	25° 24' 34.05"	126	67° 29' 25.26"	25° 36' 00.45"
16	67° 37' 48.30"	25° 24' 41.76"	127	67° 29' 46.76"	25° 35' 55.22"
17	67° 37' 10.61"	25° 24' 40.04"	128	67° 30' 00.70"	25° 35' 55.22"
18	67° 37' 02.90"	25° 24' 41.33"	129	67° 30' 20.45"	25° 35' 47.09"
19	67° 36' 50.05"	25° 24' 49.04"	130	67° 30' 25.10"	25° 35' 40.70"
20	67° 36' 39.77"	25° 24' 48.61"	131	67° 30' 37.88"	25° 35' 37.79"
21	67° 36' 29.49"	25° 24' 45.61"	132	67° 30' 44.85"	25° 35' 31.40"
22	67° 36' 12.79"	25° 24' 34.05"	133	67° 30' 56.46"	25° 35' 29.08"
23	67° 36' 08.08"	25° 24' 34.05"	134	67° 31' 10.98"	25° 35' 10.49"
24	67° 35' 53.52"	25° 24' 41.33"	135	67° 31' 16.21"	25° 34' 54.81"
25	67° 35' 36.81"	25° 24' 40.04"	136	67° 31' 20.86"	25° 34' 49.58"
26	67° 35' 16.26"	25° 24' 18.20"	137	67° 31' 43.51"	25° 34' 42.61"
27	67° 34' 43.71"	25° 24' 16.06"	138	67° 31' 48.74"	25° 34' 44.35"
28	67° 34' 35.14"	25° 24' 07.06"	139	67° 32' 15.46"	25° 35' 07.00"
29	67° 34' 27.86"	25° 23' 52.50"	140	67° 32' 13.78"	25° 35' 21.35"
30	67° 34' 12.01"	25° 23' 55.93"	141	67° 32' 17.21"	25° 35' 28.21"
31	67° 34' 06.44"	25° 24' 00.21"	142	67° 32' 47.19"	25° 35' 39.34"
32	67° 33' 52.31"	25° 24' 01.07"	143	67° 32' 47.19"	25° 35' 42.77"
33	67° 33' 21.90"	25° 23' 48.65"	144	67° 32' 39.05"	25° 35' 51.76"
34	67° 33' 06.91"	25° 23' 45.22"	145	67° 32' 40.34"	25° 35' 58.62"
35	67° 32' 50.97"	25° 23' 33.74"	146	67° 32' 52.33"	25° 35' 59.05"
36	67° 32' 47.98"	25° 23' 19.18"	147	67° 32' 57.47"	25° 36' 01.62"
37	67° 32' 41.55"	25° 23' 17.04"	148	67° 33' 07.75"	25° 36' 18.75"
38	67° 32' 25.28"	25° 23' 18.32"	149	67° 33' 13.74"	25° 36' 08.04"
39	67° 32' 17.14"	25° 23' 24.75"	150	67° 33' 21.02"	25° 36' 08.90"
40	67° 32' 01.74"	25° 23' 29.92"	151	67° 33' 53.58"	25° 36' 00.76"
41	67° 31' 36.83"	25° 23' 16.89"	152	67° 34' 17.56"	25° 35' 58.62"
42	67° 31' 26.55"	25° 23' 16.47"	153	67° 34' 31.27"	25° 35' 53.48"
43	67° 31' 20.99"	25° 23' 10.90"	154	67° 35' 22.24"	25° 35' 54.33"
44	67° 31' 14.13"	25° 23' 11.75"	155	67° 35' 44.93"	25° 35' 59.05"
45	67° 31' 09.85"	25° 23' 17.32"	156	67° 36' 22.20"	25° 36' 02.04"
46	67° 31' 02.57"	25° 23' 19.89"	157	67° 36' 33.76"	25° 36' 01.62"
47	67° 30' 47.58"	25° 23' 16.04"	158	67° 36' 47.89"	25° 35' 55.19"
48	67° 30' 14.17"	25° 23' 16.04"	159	67° 36' 57.75"	25° 35' 59.47"

49	67° 30' 10.31"	25° 23' 13.89"	160	67° 37' 19.59"	25° 35' 59.47"
50	67° 29' 58.75"	25° 23' 18.60"	161	67° 37' 38.86"	25° 35' 55.62"
51	67° 29' 48.04"	25° 23' 18.18"	162	67° 37' 45.81"	25° 35' 50.46"
52	67° 29' 34.34"	25° 23' 12.18"	163	67° 37' 55.14"	25° 35' 48.31"
53	67° 28' 41.23"	25° 23' 01.05"	164	67° 38' 27.70"	25° 35' 44.56"
54	67° 28' 19.56"	25° 22' 47.34"	165	67° 39' 07.53"	25° 35' 27.86"
55	67° 28' 04.99"	25° 22' 42.63"	166	67° 39' 36.23"	25° 35' 27.00"
56	67° 27' 58.14"	25° 22' 36.63"	167	67° 40' 03.21"	25° 35' 30.00"
57	67° 27' 42.72"	25° 22' 37.49"	168	67° 40' 34.44"	25° 35' 45.52"
58	67° 27' 19.16"	25° 22' 46.05"	169	67° 40' 43.58"	25° 35' 52.81"
59	67° 27' 04.60"	25° 22' 43.06"	170	67° 40' 52.46"	25° 36' 13.91"
60	67° 26' 25.20"	25° 22' 46.91"	171	67° 40' 55.03"	25° 36' 14.76"
61	67° 26' 19.20"	25° 22' 46.48"	172	67° 40' 59.74"	25° 36' 07.48"
62	67° 26' 11.92"	25° 22' 39.20"	173	67° 41' 01.45"	25° 35' 54.20"
63	67° 25' 54.79"	25° 22' 38.34"	174	67° 41' 20.30"	25° 35' 57.63"
64	67° 25' 39.37"	25° 22' 43.06"	175	67° 41' 39.57"	25° 35' 50.78"
65	67° 25' 23.44"	25° 22' 43.49"	176	67° 42' 03.56"	25° 35' 49.07"
66	67° 24' 56.46"	25° 22' 41.77"	177	67° 42' 11.69"	25° 35' 41.36"
67	67° 24' 44.89"	25° 22' 43.49"	178	67° 42' 16.41"	25° 35' 40.50"
68	67° 24' 33.33"	25° 22' 36.63"	179	67° 42' 32.12"	25° 35' 44.09"
69	67° 24' 20.48"	25° 22' 36.63"	180	67° 43' 11.09"	25° 35' 45.80"
70	67° 24' 09.34"	25° 22' 41.34"	181	67° 43' 43.21"	25° 35' 59.94"
71	67° 23' 56.92"	25° 22' 37.92"	182	67° 44' 04.63"	25° 35' 56.51"
72	67° 23' 38.50"	25° 22' 39.63"	183	67° 44' 31.18"	25° 35' 59.08"
73	67° 23' 32.51"	25° 22' 32.35"	184	67° 44' 41.46"	25° 35' 32.10"
74	67° 23' 23.42"	25° 22' 31.60"	185	67° 44' 41.04"	25° 35' 21.82"
75	67° 23' 23.42"	25° 22' 31.60"	186	67° 44' 50.88"	25° 34' 49.27"
76	67° 23' 17.00"	25° 22' 40.59"	187	67° 45' 00.81"	25° 33' 49.87"
77	67° 23' 14.86"	25° 22' 57.30"	188	67° 44' 57.31"	25° 33' 31.49"
78	67° 23' 20.42"	25° 23' 11.44"	189	67° 44' 48.74"	25° 33' 25.62"
79	67° 23' 13.35"	25° 23' 32.64"	190	67° 44' 41.46"	25° 33' 16.20"
80	67° 23' 18.50"	25° 23' 38.20"	191	67° 44' 23.47"	25° 33' 11.91"
81	67° 23' 42.05"	25° 23' 50.63"	192	67° 44' 13.62"	25° 33' 02.06"
82	67° 23' 49.33"	25° 24' 03.05"	193	67° 44' 07.20"	25° 32' 21.37"
83	67° 24' 05.61"	25° 24' 45.87"	194	67° 43' 53.49"	25° 32' 02.61"
84	67° 24' 09.89"	25° 25' 06.43"	195	67° 43' 50.49"	25° 31' 51.91"
85	67° 24' 18.46"	25° 25' 29.56"	196	67° 43' 47.92"	25° 31' 30.06"
86	67° 24' 27.03"	25° 26' 24.39"	197	67° 43' 43.21"	25° 31' 15.07"
87	67° 24' 32.16"	25° 26' 28.67"	198	67° 43' 49.64"	25° 30' 51.52"
88	67° 24' 51.87"	25° 26' 33.38"	199	67° 43' 44.07"	25° 30' 34.81"
89	67° 25' 01.29"	25° 26' 39.97"	200	67° 43' 52.64"	25° 30' 14.68"
90	67° 25' 14.14"	25° 26' 58.82"	201	67° 44' 01.20"	25° 30' 04.83"
91	67° 25' 18.42"	25° 27' 20.66"	202	67° 44' 00.32"	25° 29' 31.12"
92	67° 25' 19.70"	25° 28' 18.48"	203	67° 43' 54.32"	25° 29' 22.99"
93	67° 25' 13.71"	25° 29' 24.14"	204	67° 43' 47.90"	25° 29' 19.99"
94	67° 25' 04.71"	25° 29' 40.42"	205	67° 43' 16.63"	25° 29' 19.13"
95	67° 24' 36.87"	25° 30' 09.97"	206	67° 43' 09.35"	25° 29' 16.56"
96	67° 24' 30.45"	25° 30' 25.82"	207	67° 43' 07.21"	25° 29' 12.71"
97	67° 24' 27.88"	25° 31' 35.63"	208	67° 43' 07.21"	25° 28' 55.57"
98	67° 24' 21.46"	25° 32' 27.76"	209	67° 42' 51.79"	25° 28' 39.30"
99	67° 24' 25.31"	25° 32' 45.32"	210	67° 42' 29.09"	25° 28' 06.49"

100	67° 24' 24.45"	25° 33' 13.59"	211	67° 42' 22.32"	25° 27' 52.52"
101	67° 24' 08.18"	25° 35' 38.65"	212	67° 42' 15.81"	25° 27' 25.86"
102	67° 24' 10.99"	25° 36' 29.12"	213	67° 42' 15.38"	25° 26' 56.68"
103	67° 24' 08.17"	25° 36' 37.93"	214	67° 42' 19.24"	25° 26' 34.84"
104	67° 25' 22.88"	25° 36' 13.27"	215	67° 42' 35.94"	25° 25' 55.17"
105	67° 25' 30.98"	25° 36' 09.74"	216	67° 42' 38.51"	25° 25' 40.18"
106	67° 25' 39.09"	25° 36' 01.64"	217	67° 42' 34.66"	25° 25' 16.20"
107	67° 25' 59.17"	25° 35' 58.82"	218	67° 42' 35.94"	25° 24' 52.64"
108	67° 26' 10.80"	25° 35' 48.60"	219	67° 43' 02.11"	25° 24' 40.65"
109	67° 26' 14.68"	25° 35' 39.44"	220	67° 43' 11.96"	25° 24' 29.94"
110	67° 26' 27.36"	25° 35' 25.34"	221	67° 43' 24.75"	25° 24' 00.53"
111	67° 26' 42.87"	25° 35' 14.42"			