

**GOVERNMENT OF SINDH
WILDLIFE & FOREST DEPARTMENT**

Dated: 28-08-2009

**Khirthar Protected Areas Complex
PART – III: Hab Dam Wildlife Sanctuary****NOTIFICATION**

No. WL & FT (SOI-DCF-992)/74

In exercise of the powers conferred by section 14 of the Sindh Wildlife Protection Ordinance, 1972 (Sindh Ordinance V of 1972) the Government of Sindh is pleased to revise the boundaries of the Khirthar Protected Areas Complex specified in the schedule given below with immediate effect.

SCHEDULE

- 1) **District(s)** : Karachi
- 2) **Tehsil(s)** : Gadap Town
- 3) **Locality** : Hab Dam
- 4) **Area** : 28,978 hectare
- 5) **Coordinates** : 67° 00' 15.24" to 67° 14' 05.25" E and 25° 04' 13.13" to 25° 15' 01.55" N

BOUNDARIES**North-east:**

Its starts from grid reference point NE1 (67° 06' 25.14", 25° 15' 01.55") at the junction point of the Hab Dam wall and the Provincial boundary of Sindh. From NE1, it follows the wall of the Hab Dam and then a metalled road in south-western direction up to the grid reference point NE2 (67° 09' 02.03", 25° 12' 37.11"). NE2 lies at Khabadi Heights (altitude: 310.3m). From NE2 it moves on the ridge line of Shorawand hills and reaches grid reference point NE3 (67° 10' 43.67", 25° 12' 02.44") which lies on the Shoring Nullah. From NE3 to grid reference point NE4 (67° 12' 18.26", 25° 11' 12.14"), it follows the boundary line of Deh Shah Chib up to Goth Godar. From NE4 it moves in south-eastern direction and crosses Karmatani Lat Nullah at the grid reference point NE5 (67° 13' 54.97", 25° 09' 17.45") near Goth Haji Jokhio. From NE5 it follows Mandiaro Nadi up to Goth Gadap at grid reference point NE6 (67° 13' 57.94", 25° 07' 57.69") which is also the eastern corner of the Hab Dam Wildlife Sanctuary. Hab Dam Wildlife Sanctuary and Khirthar National Park have a common boundary from the grid reference point NE1 to NE5.

South:

Starting from grid reference S1 (67° 13' 57.94", 25° 07' 57.69") the boundary follows the metalled road (Northern Bypass to Gadap town) to Northern Bypass up to grid reference point S3 (67° 06' 59.49", 25° 04' 13.13"). {Grid reference point between S1 and S3 is; S2 (67° 11' 12.82", 25° 05' 13.43")}. From S3 it follows Northern Bypass Road up to its junction with Hab Dam

Road at grid reference point S4 (67° 00' 50.10", 25° 04' 29.13"). From S4, it shifts in north-western direction up to grid reference point S5 (67° 00' 15.24", 25° 05' 33.32") near Band Murad Khan. S5 is the south-western corner of the Hab Dam Wildlife Sanctuary.

North-west:

From grid reference point NW1 (67° 00' 15.24", 25° 05' 33.32") to NW4 (67° 06' 25.14", 25° 15' 01.55") the boundary line follows Sindh Provincial boundary and centre line of the Hab River. {Grid reference points between NW1 and NW2 are; NW2 (67° 01' 12.31", 25° 08' 40.57") and NW3 (67° 02' 43.03", 25° 12' 58.93")}.}

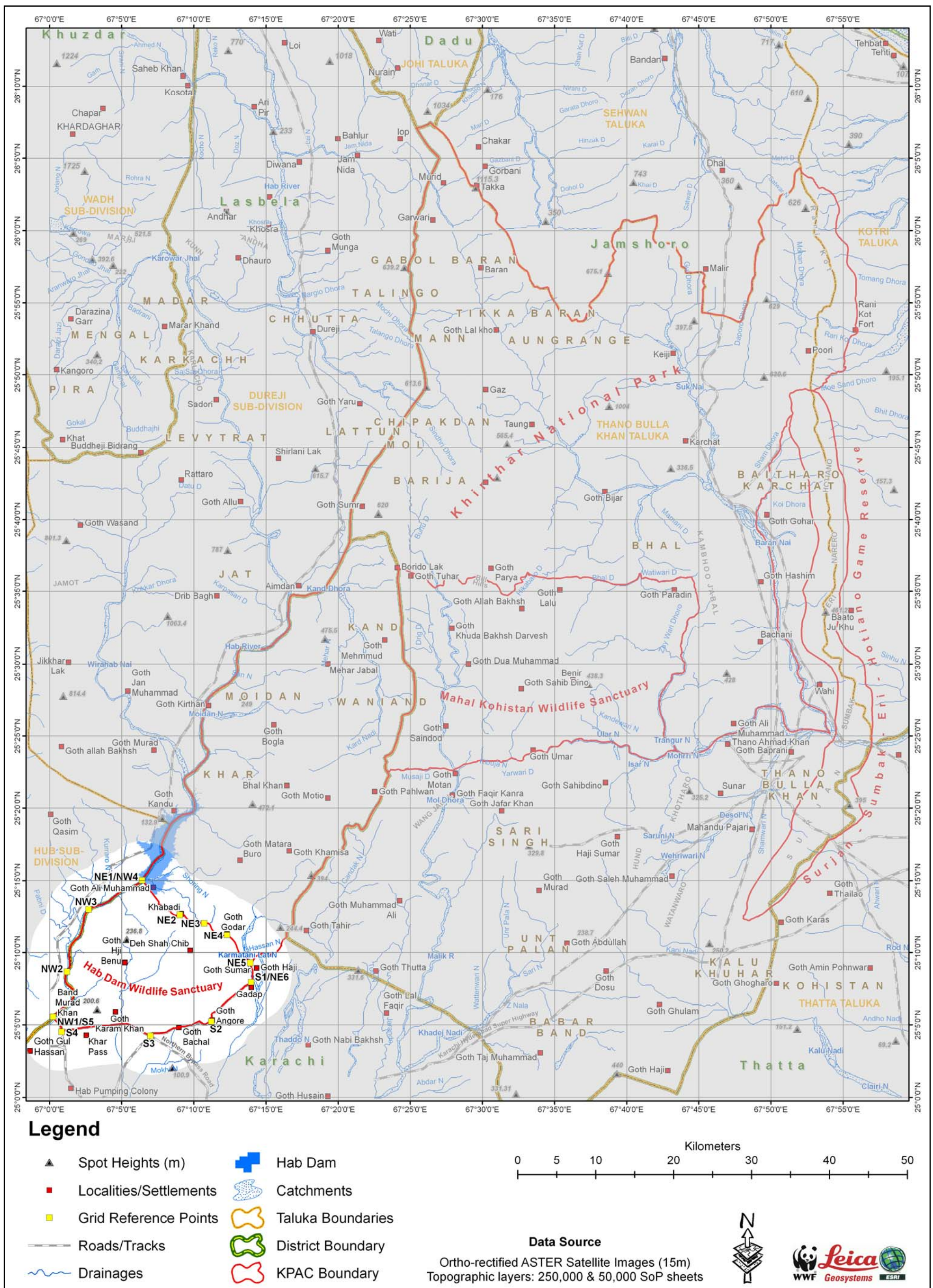
REFERENCE

Ortho-rectified ASTER (15 m) Satellite Images
1:250,000 and 1:50,000 Survey of Pakistan Maps
Projection: Geographic Coordinate System
Spheroid & Datum: World Geodetic System (WGS) 84
(Single frequency GPS receiver was used for the field data collection)

(Authority)
Government of Sindh

A copy is forwarded to:-

1. _____
2. _____
3. _____
4. _____



Map Page: GIS map of the Khirthar Protected Areas Complex - Part-III: Hab Dam Wildlife Sanctuary

List of selective boundary coordinates

No.	Longitude	Latitude	No.	Longitude	Latitude
1	67° 13' 54.97"	25° 09' 17.45"	46	67° 01' 24.01"	25° 09' 22.68"
2	67° 14' 05.25"	25° 08' 42.62"	47	67° 01' 20.16"	25° 09' 39.38"
3	67° 14' 02.32"	25° 08' 10.38"	48	67° 01' 26.58"	25° 10' 24.10"
4	67° 13' 57.94"	25° 07' 57.69"	49	67° 01' 48.42"	25° 10' 53.65"
5	67° 13' 52.28"	25° 07' 51.10"	50	67° 01' 57.42"	25° 11' 00.08"
6	67° 13' 34.54"	25° 07' 41.37"	51	67° 02' 09.63"	25° 11' 19.35"
7	67° 12' 29.10"	25° 06' 49.03"	52	67° 02' 18.62"	25° 11' 52.76"
8	67° 11' 40.16"	25° 06' 03.27"	53	67° 02' 23.12"	25° 12' 27.45"
9	67° 11' 15.80"	25° 05' 47.33"	54	67° 02' 31.47"	25° 12' 46.08"
10	67° 11' 13.86"	25° 05' 44.37"	55	67° 02' 43.03"	25° 12' 58.93"
11	67° 11' 12.82"	25° 05' 13.43"	56	67° 02' 56.40"	25° 13' 07.15"
12	67° 10' 58.14"	25° 05' 08.85"	57	67° 03' 42.01"	25° 13' 20.65"
13	67° 10' 46.61"	25° 05' 02.00"	58	67° 04' 03.21"	25° 13' 31.57"
14	67° 10' 41.14"	25° 05' 02.63"	59	67° 04' 52.68"	25° 14' 12.04"
15	67° 10' 22.53"	25° 05' 15.08"	60	67° 05' 49.21"	25° 14' 36.46"
16	67° 09' 50.47"	25° 04' 57.83"	61	67° 06' 20.05"	25° 14' 54.45"
17	67° 09' 43.83"	25° 04' 58.94"	62	67° 06' 25.13"	25° 15' 01.55"
18	67° 09' 31.40"	25° 04' 53.91"	63	67° 13' 54.97"	25° 09' 17.45"
19	67° 09' 06.33"	25° 04' 52.09"	64	67° 13' 47.72"	25° 09' 28.17"
20	67° 08' 49.15"	25° 04' 45.65"	65	67° 13' 38.31"	25° 09' 31.50"
21	67° 08' 33.36"	25° 04' 43.60"	66	67° 13' 35.28"	25° 09' 42.80"
22	67° 08' 04.77"	25° 04' 27.20"	67	67° 13' 27.99"	25° 09' 45.93"
23	67° 07' 36.43"	25° 04' 23.30"	68	67° 13' 13.34"	25° 09' 45.59"
24	67° 07' 05.70"	25° 04' 23.66"	69	67° 12' 50.95"	25° 10' 40.84"
25	67° 06' 59.49"	25° 04' 13.13"	70	67° 12' 25.26"	25° 11' 08.10"
26	67° 06' 24.79"	25° 04' 29.49"	71	67° 12' 18.26"	25° 11' 12.14"
27	67° 05' 27.81"	25° 05' 02.32"	72	67° 11' 47.09"	25° 11' 08.94"
28	67° 05' 16.96"	25° 05' 05.00"	73	67° 11' 19.91"	25° 11' 30.13"
29	67° 03' 01.14"	25° 04' 52.47"	74	67° 11' 14.32"	25° 11' 36.52"
30	67° 01' 01.96"	25° 04' 35.36"	75	67° 11' 06.63"	25° 11' 56.60"
31	67° 00' 49.36"	25° 04' 30.06"	76	67° 10' 59.96"	25° 12' 02.16"
32	67° 00' 46.93"	25° 04' 51.00"	77	67° 10' 35.60"	25° 12' 04.67"
33	67° 00' 21.17"	25° 05' 20.68"	78	67° 10' 15.43"	25° 12' 03.28"
34	67° 00' 15.24"	25° 05' 33.32"	79	67° 09' 58.24"	25° 12' 06.06"
35	67° 00' 18.24"	25° 05' 41.52"	80	67° 09' 38.81"	25° 12' 14.00"
36	67° 00' 22.80"	25° 05' 45.75"	81	67° 09' 12.74"	25° 12' 40.57"
37	67° 01' 21.73"	25° 06' 31.67"	82	67° 08' 46.99"	25° 12' 34.03"
38	67° 01' 37.50"	25° 06' 49.14"	83	67° 08' 36.13"	25° 12' 36.91"
39	67° 01' 40.71"	25° 07' 09.05"	84	67° 08' 25.14"	25° 12' 44.37"
40	67° 01' 35.58"	25° 07' 28.33"	85	67° 08' 22.91"	25° 12' 50.31"
41	67° 01' 10.52"	25° 07' 48.88"	86	67° 08' 03.99"	25° 12' 58.70"
42	67° 01' 05.38"	25° 07' 58.52"	87	67° 07' 53.85"	25° 13' 11.06"
43	67° 01' 04.09"	25° 08' 13.94"	88	67° 07' 33.24"	25° 13' 21.95"
44	67° 01' 07.95"	25° 08' 33.21"	89	67° 07' 33.59"	25° 13' 31.60"
45	67° 01' 24.01"	25° 09' 02.76"	90	67° 06' 25.13"	25° 15' 01.55"