

**GOVERNMENT OF PAKISTAN
CHIEF SECRETARY NORTHERN AREAS
GILGIT**

Dated: 25-01-2010

NOTIFICATION

No. F&A-8 (4)/F/2001

In exercise of the powers conferred under section 22 of Northern Areas Wildlife preservation Act 1975, read with the section 1(2) (b) (iii), 28((1) & (2) and 80(1) (b) of Pakistan forest act 1927, the provincial government for the Northern Area is pleased to re-notify the Khunjerab National Park with its changed boundary specified in the schedule given below with immediate effect.

SCHEDULE

- 1) District(s)** : Gilgit
2) Tehsil(s) : Hunza Sub-division
3) Locality : Khunjerab National Park (Khunjerab River, Pamirchi Bridge, Gujerab River, Pamir - e - Tang nullah, Shopdin Pass, Yazghil Sar, Yakshin Sar, Kanjut Sar, Kailas Peak and Khunjerab Pass)
4) Area : 4, 45,506 hectares (approx. 4,455.06 km²)
5) Coordinates : 74° 52' 33.21"E, 36° 56' 11.63"N to 76° 03' 26.96" E, 36° 13' 24.24" N.

BOUNDARIES

The boundary of the Khunjerab National Park follows the following references in all the directions.

North:

Northern side of the Khunjerab National Park follows the Pak – China border starting from the grid reference point N1/W24 (74° 52' 33.20"E, 36° 56' 11.65"N) to grid reference point E1/N6 (75° 31' 52.50"E, 36° 46' 30.04"N) {Grid reference points between N1/W24 and E1/N6 are; N2 (75° 09' 01.94"E, 37° 01' 11.03"N), N3 (75° 14' 07.62"E, 36° 57' 34.96"N), N4 (75° 23' 49.70"E, 36° 57' 25.34"N) and N5 (75° 27' 30.71"E, 36° 43' 20.50"N)}.

East:

Eastern side of the boundary starts from grid reference points E1/N6 (75° 31' 52.50"E, 36° 46' 30.04"N). From E1/N6 boundary follows the Pak - China border up to grid reference point E3/S1 (75° 57' 04.75"E, 36° 04' 05.41"N) {E2 (75° 56' 33.04"E, 36° 36' 38.34"N) is between the grid reference point E1/N6 and E3/S1.

South:

Southern boundary of Khunjerab National Park starts from the grid reference point E3/S1 (75° 57' 04.75"E, 36° 04' 05.41"N) and follows the common administrative boundary of Gilgit and Baltistan districts up to grid reference point

W1/S4 (75° 21' 28.58"E, 36° 14' 54.82"N) at the Yakshin Sar (7,583 m) {Grid reference points between E3/S1 and W1/S4 are: S2 (75° 49' 44.76"E, 36° 01' 21.04"N) at Kailas Peak and S3 (75° 25' 01.67"E, 36° 12' 17.64"N) at Kanjut Sar.

West:

The western boundary of Khunjerab National Park starts from the grid reference point W1/S4 (75° 21' 28.58"E, 36° 14' 54.82"N) at the Yakshin Sar. From W1/S4, the boundary follows a ridge line in northern direction to the grid reference point W2 (75° 24' 09.09" E, 36° 21' 04.05" N) at Yazghil Sar. From W2, the boundary dips northward into Virjerab Nullah at W3 (75° 24' 45.62"E, 36° 23' 11.84" N). From W3, the boundary follows Virjerab Nullah and moves in north-west direction up to grid reference point W4 (75° 22' 58.07"E, 36° 25' 32.75" N). From this point boundary moves along the ridge line and reaches at grid reference point W5 (75° 22' 26.83" E, 36° 27' 26.42" N) at Putput Peak. The boundary further follows ridgeline in northern direction and crosses Zardgarbin Pass and reaches at grid reference point W6 (75° 21' 38.01" E, 36° 31' 10.42" N) at Shopdin Pass. Boundary further extends on the ridgeline in eastern direction up to grid reference point W7 (75° 24' 33.18" E, 36° 32' 11.89"N) tracing the elevation of 5,683 m and 5,728 m.

From W7 to W8 (75° 24' 01.02" E, 36° 31' 05.34" N), the boundary moves in south-west direction along the water channel (which is primary water channel of Pamir - e - Tang nullah). From grid reference point W8 to W9 (75° 25' 09.37" E, 36° 30' 49.87" N) the boundary further moves eastward and follows a water channel which is one of the primary water channel for the Pamir - e - Tang nullah.

From W9 boundary moves along the ridgeline including grid reference points W10 (75° 24' 52.18" E, 36° 30' 13.27" N) and W11 (75° 25' 45.21" E, 36° 29' 42.49" N). From W11 to W12 (75° 26' 23.55" E, 36° 27' 37.96" N), the boundary moves southwards following a water channel (Pass). Grid reference point W12 (75° 26' 23.55" E, 36° 27' 37.96" N) to W13 (75° 36' 16.35" E, 36° 27' 56.93" N) the boundary moves along the Pamir-e-Tang Nullah and follows a primary water channel of Pamir-e-Tang northwards up to the grid reference point W14 (75° 36' 18.02" E, 36° 29' 19.45" N). From the grid reference point W14 to W15 (75° 38' 12.87" E, 36° 35' 19.36" N), National Park's boundary moves along the ridge line on sub – watershed of Shujerab Nullah including the Shujerab glacier. From grid reference point W15 to W16 (75° 34' 27.54" E, 36° 38' 26.26" N) the boundary of the Park follows a ridgeline of Gujerab mountains (Historic Pak – China Border). From W16 the boundary moves in westward direction following the ridge line up to W17 (75° 25' 21.59" E, 36° 38' 00.15" N) at Ghidim Nullah. From W16 to W17, boundary passes through the elevations of 6063 m, 5805 m, 5857 m and 5443 m. From W17 the boundary crosses the Ghidim Nullah in northern direction and reaches at W18 (75° 25' 35.07"E, 36° 40' 51.23" N) which is at the western watershed boundary of Ghidim Nullah. The boundary further passes through the elevations at 5,918 m and 4,925 m in north-western direction up to grid reference point W19 (75° 23' 11.35" E, 36° 43' 21.16" N). From grid reference point W19 to W20 (75° 17' 57.82" E, 36° 41' 42.62" N), the boundary moves along the ridge line in south-western direction which is the northern watershed boundary of Chupchingal nullah.

From W20 to W21 (74° 59' 21.58" E, 36° 47' 20.17" N), the boundary further moves westwards along the ridge line which is also northern watershed boundary of Gujerab river. From W21, the boundary moves along the Gujerab river in the western direction and reaches at the grid reference point W22 (74° 57' 22.46" E, 36° 47' 27.59" N) which is at the confluence of Khunjerab and Gujerab rivers. Boundary further extends northward along the Khunjerab river upto grid reference point W23 (74° 57' 47.61" E, 36° 49' 07.51" N) at Pamirchi Bridge. From W23, the boundary moves along the ridge line (which is the southern watershed boundary of Dhee nullah) up to grid reference point N1/W24 (74° 52' 33.21" E, 36° 56' 11.63" N) at Pak-China border. Elevations 5838 m, 5736 m, 5810 m, 5442 m, 5643 m exists between W23 and N1/W24.

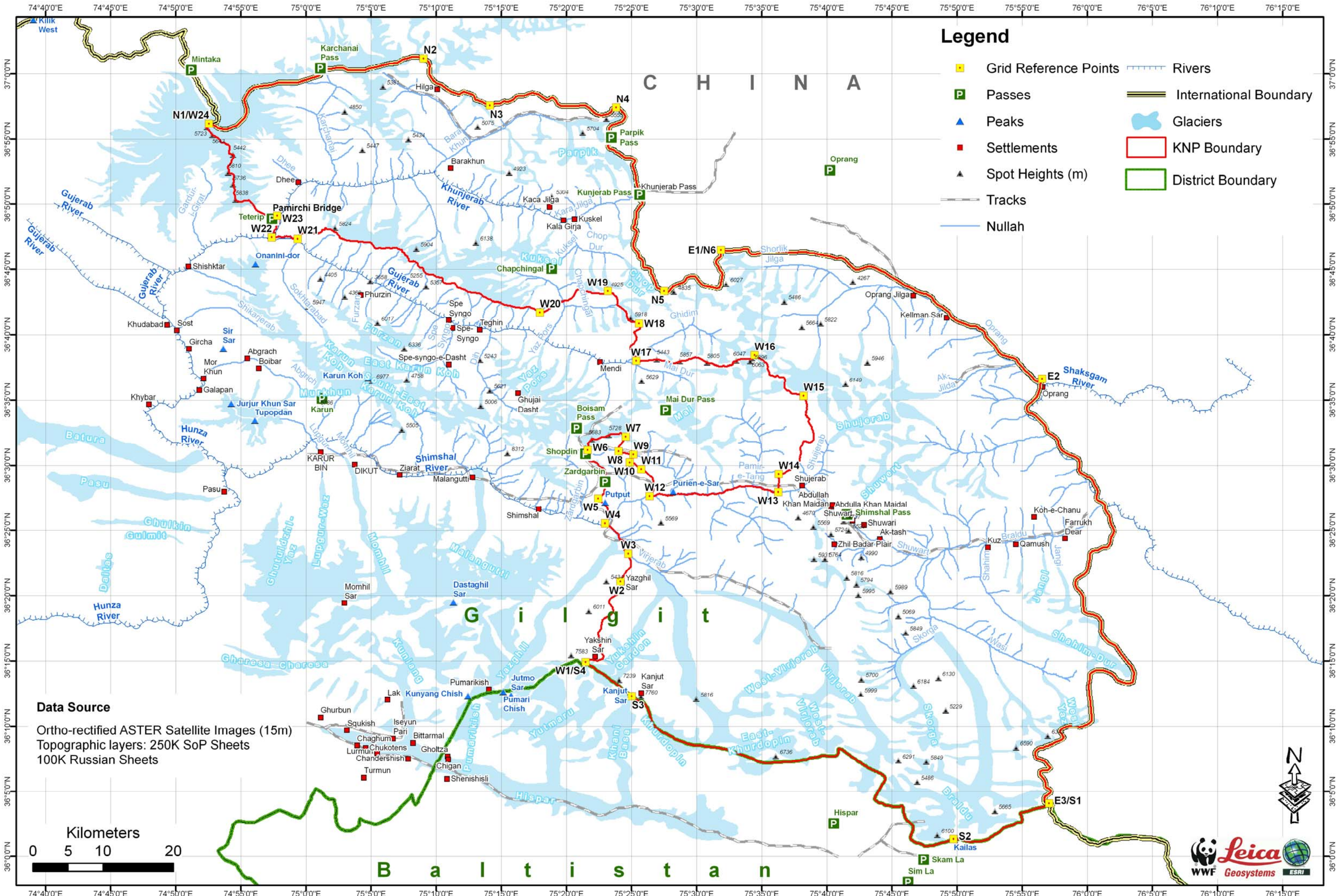
REFERENCE

Geo-Rectified ASTER (15 m) Satellite Image
1: 2,50,000 Survey of Pakistan Maps
1: 1,00,000 Russian Maps
Projection: Geographic Coordinate System
Spheroid & Datum: World Geodetic System (WGS) 84
(Single frequency GPS receiver was used for the field data collection)

(Authority)
Chief Secretary, Northern Areas

A copy is forwarded to the:-

1. _____
2. _____
3. _____
4. _____



GIS Map of Khunjerab National Park Boundary with Grid Reference Points

List of selected boundary coordinates

S. No	Longitude (E)	Latitude (N)	S. No	Longitude (E)	Latitude (N)
1	76° 01' 46.56"	36° 24' 29.20"	51	75° 59' 35.41"	36° 10' 00.66"
2	76° 01' 46.56"	36° 24' 29.20"	52	75° 59' 21.26"	36° 09' 58.75"
3	76° 01' 41.41"	36° 23' 59.60"	53	75° 59' 11.62"	36° 10' 03.25"
4	76° 01' 34.36"	36° 23' 45.46"	54	75° 58' 34.36"	36° 10' 03.90"
5	76° 01' 11.21"	36° 23' 42.90"	55	75° 57' 51.34"	36° 09' 41.40"
6	76° 00' 46.80"	36° 23' 29.40"	56	75° 57' 51.34"	36° 09' 36.25"
7	76° 00' 25.60"	36° 23' 27.46"	57	75° 58' 08.04"	36° 09' 09.94"
8	76° 00' 19.84"	36° 23' 24.90"	58	75° 58' 03.54"	36° 09' 02.84"
9	76° 00' 12.74"	36° 23' 16.55"	59	75° 56' 59.28"	36° 08' 32.03"
10	76° 00' 09.86"	36° 22' 50.20"	60	75° 56' 13.67"	36° 08' 18.53"
11	75° 59' 58.96"	36° 21' 59.44"	61	75° 56' 04.02"	36° 08' 12.08"
12	75° 59' 42.86"	36° 21' 38.23"	62	75° 55' 58.91"	36° 08' 03.73"
13	75° 59' 23.60"	36° 21' 28.62"	63	75° 56' 00.17"	36° 07' 40.62"
14	75° 59' 10.10"	36° 21' 17.68"	64	75° 56' 04.02"	36° 07' 35.47"
15	75° 59' 06.25"	36° 21' 11.92"	65	75° 56' 42.58"	36° 07' 20.06"
16	75° 59' 02.40"	36° 20' 52.01"	66	75° 57' 03.78"	36° 06' 56.30"
17	75° 59' 10.10"	36° 20' 34.01"	67	75° 57' 06.37"	36° 06' 49.86"
18	75° 59' 28.10"	36° 20' 17.30"	68	75° 56' 57.37"	36° 06' 40.21"
19	75° 59' 39.01"	36° 19' 56.10"	69	75° 56' 25.87"	36° 06' 37.01"
20	75° 59' 38.08"	36° 19' 20.75"	70	75° 56' 19.46"	36° 06' 25.45"
21	75° 59' 42.32"	36° 18' 50.22"	71	75° 56' 20.72"	36° 06' 16.45"
22	76° 00' 00.11"	36° 18' 37.76"	72	75° 56' 38.08"	36° 06' 00.40"
23	76° 00' 24.52"	36° 18' 33.91"	73	75° 56' 46.43"	36° 05' 43.04"
24	76° 00' 48.92"	36° 18' 23.65"	74	75° 56' 44.20"	36° 05' 26.99"
25	76° 01' 03.07"	36° 18' 03.10"	75	75° 57' 07.96"	36° 05' 08.99"
26	76° 01' 03.07"	36° 17' 30.95"	76	75° 57' 07.96"	36° 04' 54.88"
27	76° 01' 00.48"	36° 17' 19.39"	77	75° 56' 45.49"	36° 04' 40.73"
28	76° 01' 05.63"	36° 17' 03.98"	78	75° 56' 40.34"	36° 04' 31.73"
29	76° 01' 18.48"	36° 16' 44.69"	79	75° 56' 43.55"	36° 04' 20.82"
30	76° 01' 39.04"	36° 16' 26.72"	80	75° 56' 54.46"	36° 04' 10.52"
31	76° 02' 06.04"	36° 16' 11.28"	81	75° 57' 04.75"	36° 04' 05.41"
32	76° 03' 20.56"	36° 14' 37.50"	82	75° 57' 04.61"	36° 03' 59.65"
33	76° 03' 33.41"	36° 14' 07.94"	83	75° 56' 56.83"	36° 03' 55.08"
34	76° 03' 32.11"	36° 13' 44.80"	84	75° 56' 36.89"	36° 03' 52.02"
35	76° 03' 26.96"	36° 13' 24.24"	85	75° 54' 54.11"	36° 03' 25.67"
36	76° 03' 12.82"	36° 13' 19.13"	86	75° 54' 48.96"	36° 03' 20.56"
37	76° 02' 43.30"	36° 13' 21.68"	87	75° 54' 58.61"	36° 02' 54.85"
38	76° 02' 16.30"	36° 13' 33.24"	88	75° 54' 55.40"	36° 02' 41.35"
39	76° 02' 00.89"	36° 13' 52.54"	89	75° 54' 29.05"	36° 02' 36.20"
40	76° 01' 46.74"	36° 14' 02.80"	90	75° 54' 04.00"	36° 02' 24.00"
41	76° 01' 28.74"	36° 14' 11.80"	91	75° 53' 37.64"	36° 02' 16.30"
42	76° 01' 10.78"	36° 14' 16.94"	92	75° 53' 10.03"	36° 01' 53.18"
43	76° 00' 38.63"	36° 14' 16.94"	93	75° 52' 21.86"	36° 01' 22.98"
44	76° 00' 20.66"	36° 14' 10.50"	94	75° 51' 40.10"	36° 01' 12.04"
45	76° 00' 09.11"	36° 13' 58.94"	95	75° 51' 04.10"	36° 01' 10.13"
46	76° 00' 05.22"	36° 13' 08.83"	96	75° 50' 48.70"	36° 01' 11.42"
47	76° 00' 06.52"	36° 12' 32.87"	97	75° 50' 16.26"	36° 01' 21.68"
48	76° 00' 15.52"	36° 11' 10.61"	98	75° 49' 44.76"	36° 01' 21.04"
49	76° 00' 16.81"	36° 10' 24.38"	99	75° 48' 04.54"	36° 00' 53.42"
50	76° 00' 10.37"	36° 10' 16.64"	100	75° 47' 39.48"	36° 00' 48.92"

101	75° 47' 32.42"	36° 00' 48.92"	151	75° 28' 20.50"	36° 09' 02.34"
102	75° 47' 07.37"	36° 01' 02.42"	152	75° 27' 07.60"	36° 09' 42.80"
103	75° 46' 44.87"	36° 01' 08.18"	153	75° 26' 50.89"	36° 09' 55.66"
104	75° 46' 30.76"	36° 01' 17.18"	154	75° 26' 36.10"	36° 10' 14.27"
105	75° 46' 22.40"	36° 01' 28.74"	155	75° 26' 27.10"	36° 10' 34.21"
106	75° 46' 33.96"	36° 01' 59.59"	156	75° 26' 25.84"	36° 10' 45.12"
107	75° 46' 34.61"	36° 02' 22.09"	157	75° 26' 09.74"	36° 11' 30.08"
108	75° 46' 30.11"	36° 02' 29.15"	158	75° 25' 50.48"	36° 11' 54.49"
109	75° 46' 05.70"	36° 02' 51.65"	159	75° 25' 33.78"	36° 11' 55.14"
110	75° 45' 56.05"	36° 03' 08.35"	160	75° 25' 23.52"	36° 12' 02.23"
111	75° 45' 50.90"	36° 03' 26.96"	161	75° 24' 06.41"	36° 13' 03.25"
112	75° 45' 48.35"	36° 03' 50.72"	162	75° 22' 02.21"	36° 14' 30.55"
113	75° 45' 44.50"	36° 03' 55.22"	163	75° 21' 45.47"	36° 14' 39.70"
114	75° 45' 31.64"	36° 03' 50.11"	164	75° 21' 28.58"	36° 14' 54.82"
115	75° 45' 02.41"	36° 03' 50.11"	165	75° 21' 35.50"	36° 15' 07.60"
116	75° 44' 56.62"	36° 03' 53.32"	166	75° 21' 47.20"	36° 15' 08.68"
117	75° 44' 32.86"	36° 03' 57.82"	167	75° 22' 23.52"	36° 15' 03.28"
118	75° 43' 56.24"	36° 04' 11.93"	168	75° 22' 45.55"	36° 15' 12.17"
119	75° 43' 38.89"	36° 04' 23.52"	169	75° 22' 49.40"	36° 15' 24.37"
120	75° 43' 36.34"	36° 04' 27.98"	170	75° 22' 32.99"	36° 15' 59.80"
121	75° 44' 27.71"	36° 05' 57.95"	171	75° 22' 33.67"	36° 16' 36.55"
122	75° 44' 27.71"	36° 06' 06.30"	172	75° 22' 26.44"	36° 16' 52.28"
123	75° 44' 24.50"	36° 06' 12.10"	173	75° 22' 24.46"	36° 17' 11.98"
124	75° 43' 57.50"	36° 06' 28.15"	174	75° 22' 38.89"	36° 17' 29.69"
125	75° 43' 40.80"	36° 06' 33.91"	175	75° 22' 42.53"	36° 18' 09.72"
126	75° 43' 22.84"	36° 06' 45.50"	176	75° 23' 14.03"	36° 18' 27.43"
127	75° 43' 07.39"	36° 06' 51.26"	177	75° 23' 31.06"	36° 18' 40.54"
128	75° 42' 32.72"	36° 07' 16.32"	178	75° 23' 32.39"	36° 19' 05.48"
129	75° 41' 53.20"	36° 07' 40.08"	179	75° 23' 14.68"	36° 19' 29.75"
130	75° 41' 17.23"	36° 08' 09.64"	180	75° 23' 13.34"	36° 19' 36.98"
131	75° 41' 03.73"	36° 08' 17.34"	181	75° 23' 28.43"	36° 19' 54.05"
132	75° 40' 52.82"	36° 08' 19.28"	182	75° 24' 14.80"	36° 20' 22.42"
133	75° 40' 50.88"	36° 08' 00.02"	183	75° 24' 16.34"	36° 20' 32.35"
134	75° 40' 45.73"	36° 07' 49.08"	184	75° 24' 09.11"	36° 21' 04.07"
135	75° 40' 35.47"	36° 07' 43.93"	185	75° 24' 12.89"	36° 21' 17.89"
136	75° 40' 12.97"	36° 07' 43.32"	186	75° 24' 33.80"	36° 21' 50.83"
137	75° 39' 53.06"	36° 07' 46.52"	187	75° 24' 54.90"	36° 22' 15.31"
138	75° 39' 33.16"	36° 07' 45.23"	188	75° 24' 54.07"	36° 22' 42.35"
139	75° 38' 38.54"	36° 07' 34.32"	189	75° 24' 49.00"	36° 22' 53.29"
140	75° 38' 22.49"	36° 07' 26.62"	190	75° 24' 45.61"	36° 23' 11.83"
141	75° 36' 09.18"	36° 07' 14.41"	191	75° 24' 26.17"	36° 23' 27.42"
142	75° 35' 15.86"	36° 07' 13.76"	192	75° 24' 21.85"	36° 23' 50.75"
143	75° 34' 37.96"	36° 07' 21.47"	193	75° 24' 17.96"	36° 23' 58.96"
144	75° 34' 00.05"	36° 07' 38.82"	194	75° 24' 18.40"	36° 24' 12.78"
145	75° 32' 11.15"	36° 08' 16.73"	195	75° 24' 05.44"	36° 24' 20.56"
146	75° 30' 58.54"	36° 08' 28.93"	196	75° 23' 58.52"	36° 24' 42.59"
147	75° 30' 41.83"	36° 08' 28.93"	197	75° 23' 26.52"	36° 25' 12.43"
148	75° 30' 20.63"	36° 08' 33.43"	198	75° 23' 02.76"	36° 25' 27.98"
149	75° 29' 51.72"	36° 08' 33.43"	199	75° 22' 58.08"	36° 25' 32.74"
150	75° 29' 12.55"	36° 08' 41.14"	200	75° 23' 13.52"	36° 26' 03.34"

201	75° 23' 12.66"	36° 26' 21.73"	251	75° 27' 05.47"	36° 27' 50.58"
202	75° 23' 06.68"	36° 26' 47.44"	252	75° 27' 44.78"	36° 27' 41.33"
203	75° 22' 26.83"	36° 27' 26.42"	253	75° 27' 50.11"	36° 27' 45.14"
204	75° 22' 35.40"	36° 27' 38.84"	254	75° 28' 06.02"	36° 27' 43.88"
205	75° 22' 52.97"	36° 27' 54.68"	255	75° 28' 08.22"	36° 27' 47.34"
206	75° 22' 55.74"	36° 28' 26.83"	256	75° 28' 33.67"	36° 27' 50.98"
207	75° 23' 01.75"	36° 28' 47.78"	257	75° 29' 10.18"	36° 27' 46.44"
208	75° 23' 09.89"	36° 29' 04.09"	258	75° 29' 49.34"	36° 27' 54.07"
209	75° 23' 08.16"	36° 29' 08.77"	259	75° 30' 10.44"	36° 27' 45.90"
210	75° 22' 57.04"	36° 29' 19.50"	260	75° 30' 27.83"	36° 27' 48.24"
211	75° 22' 54.44"	36° 29' 44.34"	261	75° 30' 33.80"	36° 27' 45.25"
212	75° 22' 35.18"	36° 29' 54.20"	262	75° 30' 42.26"	36° 27' 47.05"
213	75° 22' 22.76"	36° 30' 04.90"	263	75° 30' 47.84"	36° 27' 44.06"
214	75° 22' 15.92"	36° 30' 15.59"	264	75° 31' 13.76"	36° 27' 52.27"
215	75° 21' 41.00"	36° 30' 24.16"	265	75° 31' 24.82"	36° 27' 47.99"
216	75° 21' 29.45"	36° 30' 34.45"	266	75° 31' 31.80"	36° 27' 52.09"
217	75° 21' 31.14"	36° 30' 55.87"	267	75° 31' 36.37"	36° 27' 50.98"
218	75° 21' 38.02"	36° 31' 10.42"	268	75° 31' 54.34"	36° 27' 53.32"
219	75° 21' 39.71"	36° 31' 36.12"	269	75° 32' 17.34"	36° 28' 06.96"
220	75° 21' 35.50"	36° 31' 43.21"	270	75° 32' 36.46"	36° 28' 07.46"
221	75° 21' 46.30"	36° 31' 50.48"	271	75° 32' 48.05"	36° 28' 15.17"
222	75° 21' 55.19"	36° 32' 02.47"	272	75° 33' 19.12"	36° 28' 24.96"
223	75° 22' 17.80"	36° 32' 02.11"	273	75° 33' 32.69"	36° 28' 22.12"
224	75° 22' 36.30"	36° 32' 10.32"	274	75° 33' 47.05"	36° 28' 25.10"
225	75° 23' 01.64"	36° 32' 13.74"	275	75° 34' 16.75"	36° 28' 24.53"
226	75° 23' 23.21"	36° 32' 26.09"	276	75° 34' 43.46"	36° 28' 20.71"
227	75° 23' 53.02"	36° 32' 25.40"	277	75° 34' 57.18"	36° 28' 17.40"
228	75° 24' 05.33"	36° 32' 33.04"	278	75° 35' 01.21"	36° 28' 12.47"
229	75° 24' 33.19"	36° 32' 11.90"	279	75° 35' 09.06"	36° 28' 09.19"
230	75° 24' 32.58"	36° 32' 05.24"	280	75° 35' 21.70"	36° 28' 09.73"
231	75° 24' 22.32"	36° 31' 56.82"	281	75° 35' 31.92"	36° 28' 04.98"
232	75° 24' 00.00"	36° 31' 27.88"	282	75° 35' 40.34"	36° 28' 04.26"
233	75° 23' 59.42"	36° 31' 07.36"	283	75° 35' 48.91"	36° 27' 58.21"
234	75° 24' 12.67"	36° 31' 01.34"	284	75° 36' 16.34"	36° 27' 56.92"
235	75° 25' 09.37"	36° 30' 49.86"	285	75° 36' 14.54"	36° 28' 33.89"
236	75° 25' 03.94"	36° 30' 39.60"	286	75° 36' 18.18"	36° 28' 43.93"
237	75° 25' 02.75"	36° 30' 31.18"	287	75° 36' 15.62"	36° 29' 05.14"
238	75° 24' 55.73"	36° 30' 24.48"	288	75° 36' 16.92"	36° 29' 18.13"
239	75° 24' 52.20"	36° 30' 13.28"	289	75° 36' 24.95"	36° 29' 23.24"
240	75° 25' 15.78"	36° 30' 08.03"	290	75° 36' 37.26"	36° 29' 22.78"
241	75° 25' 45.23"	36° 29' 42.50"	291	75° 37' 11.71"	36° 29' 42.11"
242	75° 26' 07.26"	36° 29' 30.26"	292	75° 37' 25.25"	36° 29' 52.51"
243	75° 26' 35.02"	36° 29' 04.31"	293	75° 37' 31.15"	36° 30' 03.24"
244	75° 26' 38.04"	36° 28' 47.42"	294	75° 37' 52.14"	36° 30' 23.08"
245	75° 26' 36.24"	36° 28' 19.70"	295	75° 37' 51.31"	36° 30' 30.42"
246	75° 26' 39.48"	36° 28' 04.58"	296	75° 37' 58.37"	36° 30' 56.05"
247	75° 26' 39.52"	36° 28' 04.58"	297	75° 37' 55.52"	36° 31' 22.26"
248	75° 26' 27.96"	36° 27' 52.99"	298	75° 38' 11.62"	36° 31' 53.26"
249	75° 26' 23.57"	36° 27' 37.94"	299	75° 38' 19.50"	36° 31' 53.26"
250	75° 26' 46.46"	36° 27' 40.46"	300	75° 38' 27.10"	36° 31' 48.76"

301	75° 38' 39.48"	36° 31' 46.78"	351	75° 30' 22.97"	36° 38' 07.51"
302	75° 38' 50.21"	36° 31' 51.85"	352	75° 29' 53.84"	36° 38' 17.56"
303	75° 38' 55.82"	36° 31' 57.47"	353	75° 29' 47.08"	36° 38' 17.09"
304	75° 38' 55.82"	36° 32' 28.46"	354	75° 29' 14.35"	36° 38' 03.59"
305	75° 38' 49.06"	36° 32' 58.63"	355	75° 28' 49.37"	36° 38' 01.82"
306	75° 38' 34.15"	36° 33' 18.61"	356	75° 28' 18.16"	36° 37' 49.37"
307	75° 38' 32.46"	36° 33' 26.24"	357	75° 27' 37.84"	36° 38' 02.08"
308	75° 38' 37.25"	36° 33' 33.55"	358	75° 27' 16.60"	36° 38' 02.58"
309	75° 38' 27.38"	36° 33' 44.28"	359	75° 26' 55.61"	36° 38' 08.59"
310	75° 38' 26.52"	36° 33' 49.07"	360	75° 25' 21.61"	36° 38' 00.13"
311	75° 38' 19.64"	36° 33' 54.25"	361	75° 25' 13.30"	36° 38' 11.87"
312	75° 38' 22.16"	36° 34' 01.02"	362	75° 25' 15.49"	36° 38' 23.57"
313	75° 38' 20.47"	36° 34' 06.67"	363	75° 25' 05.99"	36° 38' 34.94"
314	75° 38' 26.38"	36° 34' 18.52"	364	75° 24' 51.55"	36° 39' 01.76"
315	75° 38' 24.43"	36° 34' 26.69"	365	75° 24' 54.61"	36° 39' 11.09"
316	75° 38' 26.66"	36° 34' 43.57"	366	75° 25' 06.31"	36° 39' 18.72"
317	75° 38' 12.88"	36° 35' 19.36"	367	75° 25' 19.99"	36° 39' 37.73"
318	75° 38' 01.03"	36° 35' 25.84"	368	75° 25' 21.86"	36° 39' 52.16"
319	75° 37' 45.80"	36° 35' 26.95"	369	75° 25' 09.44"	36° 40' 14.05"
320	75° 37' 35.11"	36° 35' 30.91"	370	75° 25' 36.52"	36° 40' 28.81"
321	75° 37' 18.77"	36° 35' 30.62"	371	75° 25' 41.45"	36° 40' 41.99"
322	75° 37' 12.00"	36° 35' 34.30"	372	75° 25' 35.08"	36° 40' 51.24"
323	75° 37' 04.69"	36° 35' 43.87"	373	75° 25' 20.96"	36° 40' 59.92"
324	75° 36' 57.06"	36° 35' 45.96"	374	75° 24' 55.33"	36° 41' 02.90"
325	75° 36' 44.24"	36° 35' 57.12"	375	75° 24' 41.87"	36° 41' 14.10"
326	75° 36' 41.72"	36° 36' 16.27"	376	75° 24' 31.39"	36° 41' 49.99"
327	75° 36' 45.40"	36° 36' 33.48"	377	75° 24' 22.32"	36° 41' 58.96"
328	75° 36' 40.03"	36° 36' 46.98"	378	75° 23' 54.31"	36° 42' 17.82"
329	75° 36' 17.78"	36° 36' 48.42"	379	75° 23' 52.04"	36° 42' 22.50"
330	75° 36' 09.61"	36° 36' 53.75"	380	75° 23' 54.49"	36° 42' 36.14"
331	75° 36' 00.86"	36° 36' 48.67"	381	75° 23' 48.52"	36° 42' 55.94"
332	75° 35' 31.56"	36° 37' 02.21"	382	75° 23' 32.50"	36° 43' 11.28"
333	75° 35' 32.96"	36° 37' 10.67"	383	75° 23' 16.91"	36° 43' 20.14"
334	75° 35' 23.96"	36° 37' 28.70"	384	75° 23' 11.36"	36° 43' 21.18"
335	75° 35' 26.77"	36° 37' 35.72"	385	75° 23' 04.78"	36° 43' 13.19"
336	75° 35' 20.87"	36° 37' 50.95"	386	75° 22' 58.87"	36° 43' 10.42"
337	75° 35' 13.81"	36° 37' 54.62"	387	75° 22' 32.52"	36° 43' 10.06"
338	75° 34' 51.56"	36° 38' 09.56"	388	75° 22' 16.03"	36° 43' 13.01"
339	75° 34' 27.55"	36° 38' 26.27"	389	75° 22' 01.81"	36° 43' 12.32"
340	75° 34' 13.19"	36° 38' 11.15"	390	75° 21' 42.05"	36° 43' 19.27"
341	75° 33' 44.89"	36° 38' 08.81"	391	75° 21' 23.00"	36° 43' 19.96"
342	75° 33' 28.22"	36° 38' 10.39"	392	75° 20' 55.21"	36° 43' 28.92"
343	75° 33' 10.40"	36° 38' 06.11"	393	75° 20' 44.27"	36° 43' 23.45"
344	75° 32' 44.84"	36° 37' 54.48"	394	75° 20' 30.91"	36° 42' 57.35"
345	75° 32' 42.11"	36° 37' 43.64"	395	75° 20' 10.25"	36° 42' 40.93"
346	75° 32' 26.23"	36° 37' 40.55"	396	75° 19' 20.46"	36° 42' 30.60"
347	75° 32' 17.30"	36° 37' 35.51"	397	75° 19' 01.02"	36° 42' 14.22"
348	75° 31' 43.03"	36° 37' 37.52"	398	75° 18' 28.80"	36° 41' 54.17"
349	75° 31' 08.54"	36° 37' 49.69"	399	75° 18' 07.56"	36° 41' 43.22"
350	75° 30' 47.30"	36° 37' 52.39"	400	75° 17' 57.84"	36° 41' 42.61"

401	75° 17' 11.65"	36° 42' 09.97"	451	75° 02' 32.10"	36° 47' 31.45"
402	75° 16' 55.85"	36° 42' 10.55"	452	75° 02' 30.91"	36° 47' 37.43"
403	75° 16' 38.86"	36° 42' 06.30"	453	75° 02' 20.36"	36° 47' 48.37"
404	75° 15' 55.73"	36° 42' 09.97"	454	75° 01' 52.50"	36° 48' 05.47"
405	75° 15' 38.70"	36° 42' 17.86"	455	75° 01' 38.75"	36° 48' 06.88"
406	75° 15' 11.99"	36° 42' 19.08"	456	75° 01' 30.43"	36° 48' 12.64"
407	75° 14' 56.80"	36° 42' 31.21"	457	75° 01' 23.02"	36° 48' 03.31"
408	75° 14' 17.38"	36° 42' 35.46"	458	75° 01' 15.60"	36° 48' 03.02"
409	75° 13' 54.48"	36° 42' 47.02"	459	75° 01' 08.18"	36° 47' 53.16"
410	75° 13' 32.34"	36° 42' 59.15"	460	75° 00' 56.38"	36° 47' 46.82"
411	75° 13' 16.54"	36° 43' 13.15"	461	75° 00' 34.96"	36° 47' 47.90"
412	75° 12' 27.83"	36° 43' 18.12"	462	75° 00' 20.66"	36° 47' 45.17"
413	75° 11' 36.35"	36° 43' 39.58"	463	75° 00' 05.00"	36° 47' 48.48"
414	75° 11' 24.04"	36° 44' 00.64"	464	74° 59' 34.76"	36° 47' 44.34"
415	75° 11' 00.28"	36° 43' 57.18"	465	74° 59' 25.15"	36° 47' 33.90"
416	75° 10' 36.44"	36° 43' 59.88"	466	74° 59' 24.86"	36° 47' 22.38"
417	75° 10' 29.21"	36° 44' 07.66"	467	74° 59' 21.59"	36° 47' 20.18"
418	75° 10' 28.09"	36° 44' 21.34"	468	74° 59' 13.60"	36° 47' 23.46"
419	75° 10' 01.42"	36° 44' 27.92"	469	74° 58' 56.32"	36° 47' 25.12"
420	75° 09' 45.07"	36° 44' 38.08"	470	74° 58' 44.76"	36° 47' 33.36"
421	75° 09' 16.24"	36° 44' 41.24"	471	74° 58' 27.88"	36° 47' 34.48"
422	75° 09' 02.30"	36° 44' 55.00"	472	74° 58' 09.44"	36° 47' 29.51"
423	75° 08' 54.31"	36° 45' 10.30"	473	74° 57' 59.29"	36° 47' 32.53"
424	75° 08' 39.01"	36° 45' 13.10"	474	74° 57' 40.07"	36° 47' 29.80"
425	75° 08' 33.83"	36° 45' 21.24"	475	74° 57' 29.34"	36° 47' 23.75"
426	75° 08' 31.24"	36° 45' 31.82"	476	74° 57' 22.46"	36° 47' 27.60"
427	75° 08' 17.88"	36° 45' 39.17"	477	74° 57' 25.52"	36° 47' 40.99"
428	75° 08' 01.18"	36° 45' 37.58"	478	74° 57' 33.55"	36° 47' 48.34"
429	75° 07' 54.41"	36° 45' 39.56"	479	74° 57' 31.21"	36° 47' 54.38"
430	75° 07' 51.20"	36° 45' 45.76"	480	74° 57' 32.54"	36° 48' 00.90"
431	75° 07' 52.03"	36° 45' 50.11"	481	74° 57' 41.40"	36° 48' 07.74"
432	75° 07' 45.05"	36° 46' 01.67"	482	74° 57' 42.59"	36° 48' 21.60"
433	75° 07' 35.11"	36° 46' 08.04"	483	74° 57' 51.26"	36° 48' 28.30"
434	75° 07' 30.90"	36° 46' 19.20"	484	74° 57' 53.42"	36° 48' 40.00"
435	75° 07' 21.97"	36° 46' 25.97"	485	74° 57' 47.63"	36° 49' 07.50"
436	75° 07' 20.75"	36° 46' 33.53"	486	74° 57' 39.06"	36° 49' 05.16"
437	75° 07' 06.64"	36° 46' 36.30"	487	74° 57' 11.30"	36° 49' 04.73"
438	75° 06' 55.30"	36° 46' 42.49"	488	74° 56' 57.16"	36° 49' 09.01"
439	75° 06' 35.78"	36° 46' 40.30"	489	74° 56' 22.88"	36° 49' 27.01"
440	75° 06' 12.28"	36° 46' 42.28"	490	74° 56' 10.46"	36° 49' 36.84"
441	75° 05' 53.95"	36° 46' 38.50"	491	74° 55' 55.06"	36° 49' 59.12"
442	75° 05' 40.85"	36° 46' 42.49"	492	74° 55' 35.04"	36° 50' 20.51"
443	75° 05' 29.29"	36° 46' 38.28"	493	74° 54' 53.68"	36° 50' 10.82"
444	75° 05' 19.32"	36° 46' 39.29"	494	74° 54' 35.71"	36° 50' 20.65"
445	75° 05' 06.18"	36° 46' 57.22"	495	74° 54' 31.86"	36° 50' 26.23"
446	75° 04' 52.07"	36° 47' 07.55"	496	74° 54' 31.43"	36° 50' 40.38"
447	75° 04' 01.88"	36° 47' 08.56"	497	74° 54' 26.28"	36° 50' 49.78"
448	75° 03' 49.54"	36° 47' 13.74"	498	74° 54' 31.43"	36° 51' 09.07"
449	75° 03' 11.52"	36° 47' 14.53"	499	74° 54' 24.98"	36° 51' 24.05"
450	75° 02' 35.88"	36° 47' 27.85"	500	74° 54' 25.85"	36° 52' 17.58"

501	74° 54' 03.17"	36° 52' 25.72"	551	75° 10' 47.17"	36° 58' 52.07"
502	74° 54' 03.17"	36° 52' 43.28"	552	75° 11' 08.38"	36° 58' 40.51"
503	74° 53' 56.94"	36° 52' 55.70"	553	75° 11' 37.93"	36° 58' 29.57"
504	74° 54' 12.78"	36° 53' 11.58"	554	75° 11' 47.58"	36° 58' 29.57"
505	74° 54' 13.64"	36° 53' 22.70"	555	75° 11' 59.78"	36° 58' 39.22"
506	74° 54' 25.20"	36° 53' 39.84"	556	75° 12' 06.19"	36° 58' 39.86"
507	74° 54' 26.93"	36° 53' 50.10"	557	75° 12' 51.80"	36° 58' 25.07"
508	74° 54' 03.78"	36° 53' 58.24"	558	75° 12' 57.60"	36° 58' 03.86"
509	74° 54' 06.37"	36° 54' 15.80"	559	75° 13' 00.80"	36° 58' 01.31"
510	74° 54' 03.78"	36° 54' 35.93"	560	75° 13' 31.01"	36° 57' 52.31"
511	74° 53' 42.40"	36° 54' 45.36"	561	75° 14' 02.47"	36° 57' 35.60"
512	74° 53' 27.17"	36° 54' 47.48"	562	75° 14' 13.42"	36° 57' 34.96"
513	74° 53' 19.46"	36° 55' 03.36"	563	75° 14' 29.47"	36° 57' 44.60"
514	74° 52' 46.92"	36° 55' 20.89"	564	75° 14' 50.03"	36° 57' 45.25"
515	74° 52' 20.35"	36° 55' 56.21"	565	75° 15' 12.53"	36° 57' 56.16"
516	74° 52' 33.20"	36° 56' 11.65"	566	75° 15' 31.14"	36° 57' 54.90"
517	74° 52' 51.20"	36° 56' 07.76"	567	75° 15' 39.49"	36° 57' 56.81"
518	74° 53' 14.32"	36° 55' 52.36"	568	75° 15' 49.14"	36° 58' 01.31"
519	74° 53' 38.76"	36° 55' 48.50"	569	75° 16' 08.40"	36° 58' 19.96"
520	74° 53' 55.46"	36° 55' 48.50"	570	75° 16' 40.55"	36° 58' 21.86"
521	74° 54' 39.13"	36° 56' 03.91"	571	75° 17' 21.66"	36° 58' 34.72"
522	74° 55' 13.84"	36° 56' 37.32"	572	75° 17' 33.22"	36° 58' 34.07"
523	74° 55' 24.10"	36° 57' 03.02"	573	75° 17' 47.98"	36° 58' 28.92"
524	74° 55' 24.10"	36° 57' 22.32"	574	75° 18' 25.88"	36° 58' 02.60"
525	74° 55' 12.54"	36° 58' 00.84"	575	75° 18' 37.48"	36° 58' 04.51"
526	74° 55' 35.69"	36° 58' 44.54"	576	75° 18' 54.79"	36° 58' 13.51"
527	74° 55' 58.80"	36° 58' 59.95"	577	75° 19' 07.97"	36° 58' 01.96"
528	74° 57' 17.17"	36° 59' 12.80"	578	75° 19' 15.67"	36° 57' 45.25"
529	74° 57' 51.88"	36° 59' 21.80"	579	75° 19' 37.52"	36° 57' 34.96"
530	74° 58' 48.40"	36° 59' 21.80"	580	75° 21' 26.10"	36° 57' 35.60"
531	74° 59' 20.54"	36° 59' 24.36"	581	75° 21' 46.66"	36° 57' 22.75"
532	75° 01' 00.77"	36° 59' 55.21"	582	75° 22' 15.56"	36° 56' 57.70"
533	75° 01' 31.58"	37° 00' 24.77"	583	75° 22' 40.62"	36° 56' 52.55"
534	75° 02' 21.70"	37° 00' 29.92"	584	75° 22' 56.06"	36° 56' 54.49"
535	75° 02' 49.96"	37° 00' 29.92"	585	75° 23' 17.23"	36° 57' 02.84"
536	75° 03' 10.55"	37° 00' 18.32"	586	75° 23' 23.68"	36° 57' 06.70"
537	75° 04' 30.18"	37° 00' 18.32"	587	75° 23' 29.47"	36° 57' 20.84"
538	75° 04' 49.48"	37° 00' 28.62"	588	75° 23' 33.94"	36° 57' 24.05"
539	75° 05' 20.29"	37° 00' 32.47"	589	75° 23' 41.03"	36° 57' 25.96"
540	75° 06' 25.85"	37° 00' 49.18"	590	75° 23' 59.96"	36° 57' 23.40"
541	75° 06' 57.96"	37° 00' 51.73"	591	75° 24' 21.82"	36° 57' 02.20"
542	75° 07' 25.57"	37° 01' 08.44"	592	75° 24' 28.22"	36° 56' 53.20"
543	75° 08' 04.13"	37° 01' 20.03"	593	75° 24' 28.87"	36° 56' 46.14"
544	75° 08' 36.24"	37° 01' 20.03"	594	75° 24' 25.67"	36° 56' 36.49"
545	75° 09' 01.94"	37° 01' 11.03"	595	75° 24' 16.67"	36° 56' 24.94"
546	75° 09' 25.09"	37° 00' 56.88"	596	75° 23' 54.82"	36° 56' 14.68"
547	75° 09' 28.94"	37° 00' 40.18"	597	75° 23' 26.56"	36° 56' 06.32"
548	75° 09' 27.40"	36° 59' 59.89"	598	75° 23' 13.06"	36° 55' 52.18"
549	75° 09' 42.30"	36° 59' 33.83"	599	75° 23' 18.85"	36° 55' 08.47"
550	75° 10' 24.06"	36° 59' 10.68"	600	75° 23' 09.85"	36° 54' 31.21"

601	75° 23' 15.00"	36° 54' 21.60"	651	75° 29' 45.60"	36° 44' 31.16"
602	75° 23' 38.76"	36° 54' 11.30"	652	75° 29' 54.60"	36° 44' 26.66"
603	75° 23' 45.20"	36° 54' 04.25"	653	75° 30' 08.75"	36° 44' 08.05"
604	75° 24' 12.82"	36° 53' 48.19"	654	75° 30' 30.60"	36° 43' 48.14"
605	75° 24' 24.05"	36° 53' 37.90"	655	75° 31' 32.59"	36° 43' 35.94"
606	75° 25' 00.05"	36° 53' 34.04"	656	75° 31' 42.20"	36° 43' 37.85"
607	75° 25' 12.25"	36° 53' 26.99"	657	75° 31' 48.65"	36° 43' 48.76"
608	75° 25' 12.25"	36° 53' 17.99"	658	75° 31' 53.15"	36° 44' 09.96"
609	75° 25' 04.55"	36° 53' 06.43"	659	75° 31' 55.06"	36° 44' 49.16"
610	75° 25' 03.90"	36° 52' 59.34"	660	75° 31' 44.80"	36° 45' 01.37"
611	75° 25' 18.66"	36° 52' 00.88"	661	75° 31' 26.15"	36° 45' 34.13"
612	75° 25' 21.90"	36° 51' 30.71"	662	75° 31' 30.00"	36° 45' 44.42"
613	75° 25' 34.72"	36° 51' 06.30"	663	75° 31' 46.06"	36° 45' 57.28"
614	75° 25' 32.16"	36° 50' 53.45"	664	75° 31' 48.65"	36° 46' 03.68"
615	75° 25' 34.72"	36° 50' 23.24"	665	75° 31' 49.30"	36° 46' 27.44"
616	75° 25' 47.24"	36° 50' 14.24"	666	75° 31' 52.50"	36° 46' 30.04"
617	75° 25' 47.24"	36° 50' 02.69"	667	75° 32' 13.70"	36° 46' 28.09"
618	75° 25' 31.19"	36° 49' 44.04"	668	75° 33' 17.32"	36° 46' 30.68"
619	75° 25' 21.58"	36° 49' 26.69"	669	75° 33' 35.28"	36° 46' 37.09"
620	75° 25' 21.58"	36° 49' 11.93"	670	75° 33' 54.58"	36° 46' 36.44"
621	75° 25' 15.78"	36° 48' 48.17"	671	75° 33' 57.78"	36° 46' 24.89"
622	75° 25' 15.78"	36° 48' 30.17"	672	75° 34' 02.93"	36° 46' 17.18"
623	75° 25' 06.13"	36° 48' 18.61"	673	75° 34' 11.89"	36° 46' 12.68"
624	75° 25' 06.78"	36° 48' 09.61"	674	75° 34' 45.95"	36° 46' 15.24"
625	75° 25' 20.28"	36° 47' 59.96"	675	75° 34' 55.60"	36° 46' 21.04"
626	75° 25' 23.48"	36° 47' 52.26"	676	75° 35' 05.24"	36° 46' 22.33"
627	75° 25' 06.78"	36° 47' 05.35"	677	75° 36' 35.50"	36° 46' 22.94"
628	75° 25' 05.81"	36° 46' 46.74"	678	75° 37' 07.00"	36° 46' 20.39"
629	75° 25' 27.01"	36° 46' 18.48"	679	75° 38' 11.22"	36° 46' 22.33"
630	75° 25' 33.46"	36° 45' 54.68"	680	75° 40' 12.00"	36° 46' 04.33"
631	75° 25' 48.22"	36° 45' 45.68"	681	75° 40' 44.44"	36° 45' 52.78"
632	75° 25' 50.81"	36° 45' 37.33"	682	75° 41' 04.99"	36° 45' 53.42"
633	75° 25' 51.42"	36° 45' 16.13"	683	75° 41' 16.58"	36° 45' 48.28"
634	75° 25' 57.22"	36° 45' 10.37"	684	75° 41' 51.90"	36° 45' 14.87"
635	75° 26' 10.07"	36° 45' 10.37"	685	75° 42' 11.20"	36° 45' 00.72"
636	75° 26' 19.72"	36° 45' 07.16"	686	75° 42' 27.90"	36° 45' 00.72"
637	75° 26' 26.77"	36° 45' 00.72"	687	75° 43' 08.36"	36° 45' 16.13"
638	75° 26' 28.07"	36° 44' 45.96"	688	75° 43' 21.22"	36° 45' 16.13"
639	75° 26' 44.12"	36° 44' 12.55"	689	75° 43' 40.48"	36° 45' 10.37"
640	75° 26' 52.15"	36° 43' 43.64"	690	75° 44' 26.09"	36° 44' 47.22"
641	75° 26' 56.00"	36° 43' 37.85"	691	75° 45' 35.82"	36° 44' 02.26"
642	75° 27' 17.32"	36° 43' 25.36"	692	75° 46' 45.84"	36° 43' 23.70"
643	75° 27' 39.06"	36° 43' 16.64"	693	75° 47' 25.01"	36° 43' 08.94"
644	75° 27' 46.12"	36° 43' 16.64"	694	75° 47' 34.01"	36° 43' 08.94"
645	75° 27' 51.91"	36° 43' 19.85"	695	75° 48' 04.21"	36° 42' 50.29"
646	75° 28' 09.23"	36° 43' 44.29"	696	75° 48' 08.71"	36° 42' 40.03"
647	75° 28' 56.14"	36° 44' 02.26"	697	75° 48' 31.18"	36° 42' 19.48"
648	75° 29' 03.19"	36° 44' 07.40"	698	75° 49' 20.35"	36° 41' 46.72"
649	75° 29' 10.28"	36° 44' 20.26"	699	75° 49' 29.35"	36° 41' 30.01"
650	75° 29' 30.19"	36° 44' 29.90"	700	75° 49' 50.52"	36° 41' 10.07"

701	75° 50' 16.87"	36° 40' 57.25"	731	75° 56' 50.06"	36° 32' 39.34"
702	75° 50' 57.98"	36° 40' 42.46"	732	75° 57' 32.80"	36° 32' 09.78"
703	75° 51' 32.69"	36° 40' 37.31"	733	75° 57' 43.06"	36° 31' 53.72"
704	75° 51' 37.19"	36° 40' 30.25"	734	75° 57' 50.11"	36° 31' 26.11"
705	75° 51' 51.30"	36° 40' 24.46"	735	75° 58' 01.70"	36° 31' 11.32"
706	75° 52' 01.60"	36° 40' 16.10"	736	75° 58' 22.26"	36° 30' 57.17"
707	75° 52' 12.50"	36° 39' 52.99"	737	75° 58' 56.32"	36° 30' 43.06"
708	75° 52' 49.15"	36° 39' 13.79"	738	75° 59' 16.87"	36° 30' 30.20"
709	75° 53' 11.29"	36° 38' 40.38"	739	75° 59' 22.63"	36° 30' 07.70"
710	75° 53' 24.79"	36° 38' 29.47"	740	75° 59' 18.46"	36° 29' 37.54"
711	75° 54' 12.96"	36° 38' 15.97"	741	75° 59' 23.60"	36° 29' 29.80"
712	75° 54' 33.55"	36° 38' 03.77"	742	75° 59' 58.96"	36° 29' 07.98"
713	75° 54' 49.61"	36° 37' 41.92"	743	76° 00' 09.86"	36° 29' 06.04"
714	75° 55' 57.07"	36° 36' 32.54"	744	76° 00' 17.57"	36° 29' 00.24"
715	75° 56' 09.28"	36° 36' 28.04"	745	76° 00' 27.86"	36° 28' 33.92"
716	75° 56' 29.18"	36° 36' 40.90"	746	76° 00' 41.33"	36° 28' 16.57"
717	75° 56' 33.04"	36° 36' 38.34"	747	76° 00' 46.48"	36° 28' 03.07"
718	75° 56' 33.68"	36° 36' 34.49"	748	76° 00' 40.07"	36° 27' 36.72"
719	75° 56' 24.04"	36° 36' 20.99"	749	76° 00' 40.72"	36° 27' 26.46"
720	75° 56' 20.18"	36° 36' 08.78"	750	76° 00' 49.07"	36° 27' 19.40"
721	75° 56' 18.56"	36° 35' 48.23"	751	76° 01' 12.18"	36° 27' 07.81"
722	75° 56' 06.36"	36° 35' 18.02"	752	76° 01' 18.91"	36° 26' 55.00"
723	75° 55' 20.10"	36° 34' 34.32"	753	76° 01' 21.50"	36° 26' 33.79"
724	75° 55' 17.54"	36° 34' 28.56"	754	76° 01' 38.86"	36° 26' 10.64"
725	75° 55' 18.19"	36° 34' 18.26"	755	76° 01' 42.06"	36° 25' 44.94"
726	75° 55' 25.25"	36° 34' 08.00"	756	76° 01' 49.76"	36° 25' 23.74"
727	75° 55' 47.75"	36° 33' 57.06"	757	76° 01' 58.76"	36° 25' 07.68"
728	75° 56' 18.56"	36° 33' 34.60"	758	76° 01' 59.41"	36° 24' 50.98"
729	75° 56' 39.12"	36° 33' 10.19"	759	76° 01' 46.56"	36° 24' 29.20"
730	75° 56' 47.47"	36° 32' 52.84"	760	76° 01' 46.56"	36° 24' 29.20"