

**GOVERNMENT OF PUNJAB
FOREST, WILDLIFE & FISHERIES DEPARTMENT**

Dated: 22-02-2010

Kathar Game Reserve

NOTIFICATION

No. SOP (WL) 12-1/2002

In exercise of the powers conferred by section 18 of the Punjab Wildlife (Protection, Preservation, Conservation & Management) Act. 1974, the Government of the Punjab is pleased to revise the boundary of the Kathar Game Reserve specified in the schedule given below with immediate effect.

SCHEDULE

- 1) District(s)** : Rawalpindi
2) Tehsil(s) : Murree
3) Locality : Kathar
4) Area : 2,832 acre(1,146 hectare)
5) Forest
Compartments : KRF 109, KRF 110, KRF 111, KRF 112 and KRF 113
6) Coordinates : 67° 06' 25.13" to 67° 56' 01.44" E and 25° 09' 17.45" to 26° 07' 28.53" N

[Details of the boundary of Kathar Game Reserve are attached as Annexure 1 (GIS Map) and Annexure 2 (list of boundary coordinates)]

BOUNDARIES

North:

Northern boundary of the Kathar Game Reserve starts from grid reference point N1 (73° 16' 34.03", 33° 46' 43.09") and moves in eastern direction along the boundary line of Kathar Reserve Forest(KRF) compartment 111 upto grid reference point N2 (73° 17' 48.62", 33° 47' 28.39") following existing boundary pillars and ridge line. N2 lies on the Saloni Chalyari Kas (and common boundary line of Kathar Reserve Forest compartment no 109, 110 and 111). Then boundary shifts in north-western direction along the boundary of KRF compartment 109 upto grid reference point N3 (73° 17' 41.94", 33° 47' 43.68"). From grid reference point N3 to N4 (73° 18' 30.31", 33° 48' 15.47") the boundary follows the boundary line of KRF compartment 109 moving along the existing boundary pillars. From N4 it turns eastwards along Kali Kas (nullah) following the northern boundary of KRF compartment 109 upto grid reference point N5 (73° 19' 04.07", 33° 47' 40.65"). It further extends southwards along KRF compartment 109 upto grid reference point N6 (73° 19' 00.63", 33° 47' 26.02") which is also the junction point of KRF compartment 109 and 110. From N6 to grid reference point N8 (73° 19' 54.04", 33° 47' 03.55") the boundary follows the boundary line of KRF compartment 110. From N6 the boundary follows Saheed Rabnawaz road (locally named as "Baik Gali") that is along the boundary line of KRF compartment 110 upto grid reference point N7 (73° 19' 37.08", 33° 47' 26.79"). N7 is at the trisection of

Moza Jammah, Moza Angoori and Moza Kathar. The boundary continues to follow the boundary line of KRF compartment 110 upto N8.

East:

The boundary starts from grid reference point E1 (73° 19' 54.04", 33° 47' 03.55") and follows the the boundary line of KRF compartment 110 upto grid reference poin E4 (73° 19' 29.45", 33° 46' 50.15"). Grid reference points E2 (73° 19' 42.41", 33° 46' 56.38") and E3 (73° 19' 32.27", 33° 47' 00.13") are in between E1 and E 4. From E4 to grid reference point E5 (73° 18' 55.46", 33° 46' 22.40") boundary line of KRF compartment 110 is the boundary reference. From E5 the boundary moves in northern direction along the boundary line of KRF compartment 110, and a small tributary and after crossing Angoori road it follows ridges in the western direction upto grid reference point E9 (73° 18' 02.85", 33° 46' 57.00"). E9 is at the common boundary corners of KRF compartment 110 and 111. Grid reference points E6 (73° 18' 54.88", 33° 46' 40.59"), E7 (73° 18' 46.66", 33° 46' 51.51") and E8 (73° 18' 26.06", 33° 46' 57.81") exist in between E5 and E9. The boundary follows a ridge line and moves along the boundary of KRF compartment 111 from grid reference point E9 to E10 (73° 17' 31.35", 33° 46' 46.91"). From E10, the boundary turns in southern direction and follows the boundary line of KRF compartment 111 upto grid reference point E11 (73° 17' 34.79", 33° 46' 36.61"). E11 is also on the common boundary corners of KRF compartment 111 and 112. From E11 the boundary moves along the boundary line of KRF compartment 112 following existing boundary pillars upto grid reference point E15 (73° 17' 27.03", 33° 45' 40.90"). E15 lies on the common boundary corners of KRF compartment No's 112 and 113. Grid reference points E12 (73° 17' 39.53", 33° 46' 23.35"), E13 (73° 17' 57.08", 33° 46' 05.12") and E14 (73° 17' 49.73", 33° 45' 49.02") lies in between E11 and E15 (E12 and E13 are at tributaries of Kathar nullah, whereas E14 and E15 are on the ridges). From E15 it follows the existing boundary pillars along the eastern boundary of KRF compartment 113 upto grid reference point E16 (73° 17' 47.55", 33° 45' 23.30").

South:

The boundary starts from grid reference point S1 (73° 17' 47.55", 33° 45' 23.30") and moves along the boundary line of KRF compartment 113 following the ridge line upto grid reference point S4 (73° 16' 16.68", 33° 44' 45.50"). Grid reference points S2 (73° 17' 03.86", 33° 45' 01.15") and S3 (73° 16' 51.66", 33° 45' 00.94") lies in between S1 and S4.

West:

It starts from grid reference point W1 (73° 16' 16.68", 33° 44' 45.50") and moves in northern directon along the boundary line of KRF compartment 113 upto grid reference point W6 (73° 17' 04.55", 33° 46' 00.80"). W6 is on common boundary corners of KRF compartment 112 and 113. Grid reference points W2 (73° 16' 22.94", 33° 45' 14.99"), W3 (73° 16' 15.21", 33° 45' 11.17"), W4 (73° 16' 06.19", 33° 45' 19.97") and W5 (73° 16' 33.46", 33° 45' 34.60") are in between W1 and W6. From W6 it follows the boundary line of KRF compartment 112 upto grid reference point W8 (73° 16' 33.65", 33° 46' 34.47") moving along existing boundary pillars. W8 is on the common boundary corners of KRF compartment 111 and 112. Grid reference point W7 (73° 16'

56.65", 33° 46' 21.80") is in between W6 and W8. From W8 it moves along the boundary line of KRF compartment 111 upto grid reference point W9 (73° 16' 34.03", 33° 46' 43.09").

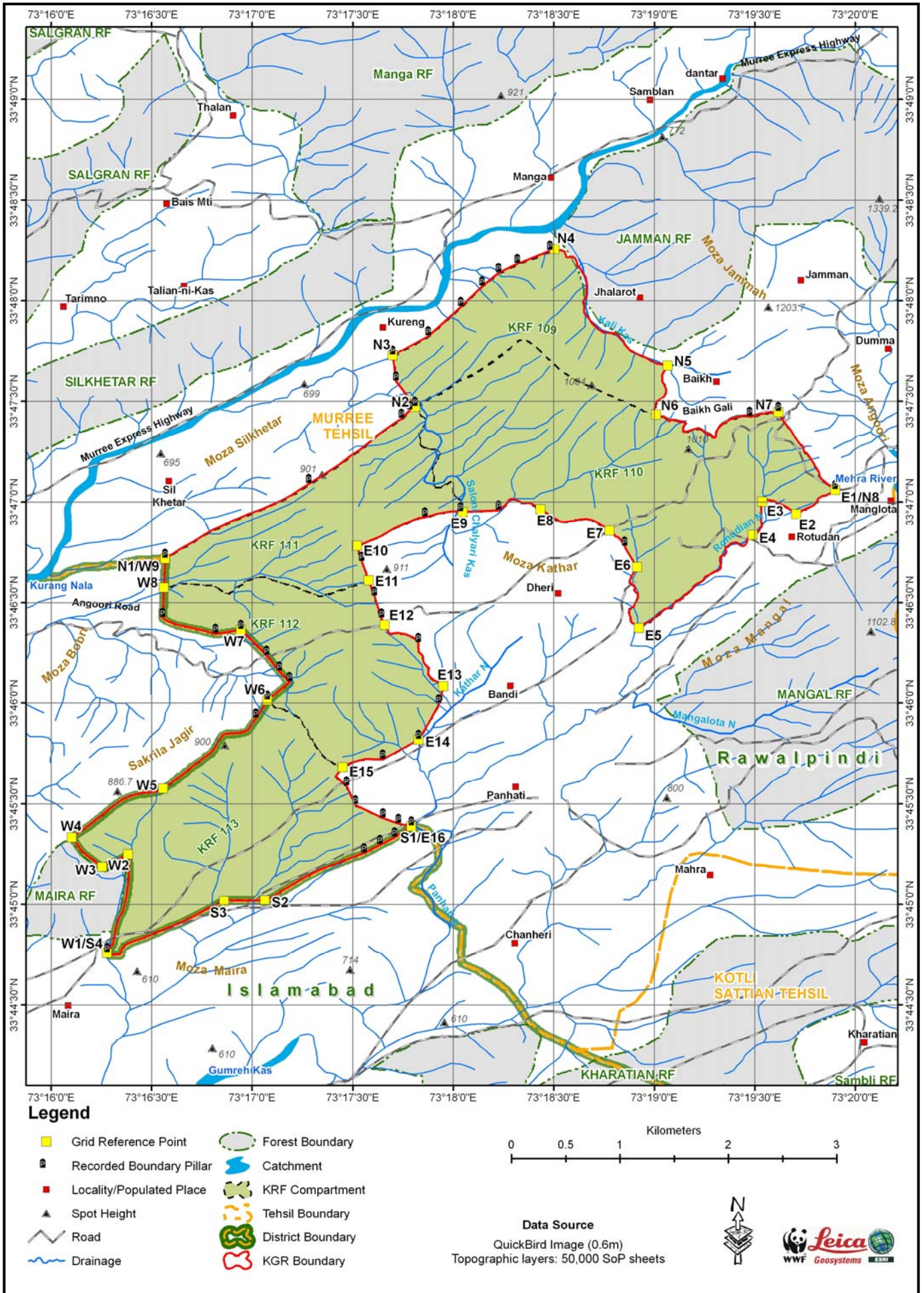
REFERENCE

QuickBird (0.6 m) Satellite Images
1:50,000 Survey of Pakistan Maps
Projection: Geographic Coordinate System
Spheroid & Datum: World Geodetic System (WGS) 84
(Single frequency GPS receiver was used for the field data collection)

(Authority)
Government of Punjab

A copy is forwarded to:-

1. _____
2. _____
3. _____
4. _____



Annexure 1: Map Page: GIS map of the Kathar Game Reserve

Annexure 2: List of selective boundary coordinates

No.	Longitude	Latitude	No.	Longitude	Latitude
1	73° 16' 06.19"	33° 45' 19.97"	159	73° 19' 42.41"	33° 46' 56.38"
2	73° 16' 09.92"	33° 45' 22.79"	160	73° 19' 39.57"	33° 46' 58.45"
3	73° 16' 13.89"	33° 45' 25.79"	161	73° 19' 35.68"	33° 47' 00.30"
4	73° 16' 17.54"	33° 45' 28.55"	162	73° 19' 34.24"	33° 47' 00.55"
5	73° 16' 21.12"	33° 45' 31.26"	163	73° 19' 32.29"	33° 47' 00.51"
6	73° 16' 26.90"	33° 45' 33.20"	164	73° 19' 32.25"	33° 46' 59.78"
7	73° 16' 31.43"	33° 45' 33.59"	165	73° 19' 31.74"	33° 46' 59.27"
8	73° 16' 33.55"	33° 45' 34.59"	166	73° 19' 32.03"	33° 46' 52.59"
9	73° 16' 36.83"	33° 45' 37.03"	167	73° 19' 31.13"	33° 46' 51.18"
10	73° 16' 40.64"	33° 45' 39.86"	168	73° 19' 28.18"	33° 46' 49.50"
11	73° 16' 42.14"	33° 45' 41.23"	169	73° 19' 27.24"	33° 46' 47.22"
12	73° 16' 44.63"	33° 45' 42.99"	170	73° 19' 26.64"	33° 46' 46.88"
13	73° 16' 47.53"	33° 45' 45.06"	171	73° 19' 24.33"	33° 46' 47.95"
14	73° 16' 48.57"	33° 45' 46.24"	172	73° 19' 22.91"	33° 46' 47.61"
15	73° 16' 51.18"	33° 45' 50.48"	173	73° 19' 21.39"	33° 46' 46.44"
16	73° 16' 52.25"	33° 45' 50.89"	174	73° 19' 21.21"	33° 46' 46.02"
17	73° 16' 57.65"	33° 45' 51.45"	175	73° 19' 21.46"	33° 46' 44.95"
18	73° 16' 58.75"	33° 45' 51.92"	176	73° 19' 19.70"	33° 46' 43.37"
19	73° 17' 00.96"	33° 45' 55.31"	177	73° 19' 19.83"	33° 46' 40.31"
20	73° 17' 02.82"	33° 45' 58.15"	178	73° 19' 19.57"	33° 46' 39.84"
21	73° 17' 04.55"	33° 46' 00.80"	179	73° 19' 18.12"	33° 46' 39.32"
22	73° 17' 06.75"	33° 46' 02.65"	180	73° 19' 15.42"	33° 46' 37.82"
23	73° 17' 09.06"	33° 46' 04.59"	181	73° 19' 14.39"	33° 46' 36.37"
24	73° 17' 11.15"	33° 46' 06.33"	182	73° 19' 12.50"	33° 46' 35.47"
25	73° 17' 08.06"	33° 46' 09.50"	183	73° 19' 10.96"	33° 46' 33.59"
26	73° 17' 04.31"	33° 46' 14.15"	184	73° 19' 08.86"	33° 46' 32.24"
27	73° 17' 02.32"	33° 46' 16.14"	185	73° 19' 08.49"	33° 46' 31.31"
28	73° 16' 59.21"	33° 46' 19.25"	186	73° 19' 06.52"	33° 46' 30.53"
29	73° 16' 56.65"	33° 46' 21.80"	187	73° 19' 05.28"	33° 46' 28.48"
30	73° 16' 52.55"	33° 46' 21.15"	188	73° 19' 03.22"	33° 46' 28.09"
31	73° 16' 49.16"	33° 46' 20.62"	189	73° 19' 01.68"	33° 46' 26.68"
32	73° 16' 43.79"	33° 46' 21.89"	190	73° 19' 00.69"	33° 46' 26.12"
33	73° 16' 40.28"	33° 46' 22.72"	191	73° 18' 59.54"	33° 46' 24.88"
34	73° 16' 37.39"	33° 46' 23.40"	192	73° 18' 57.48"	33° 46' 23.88"
35	73° 16' 34.56"	33° 46' 24.42"	193	73° 18' 55.46"	33° 46' 22.40"
36	73° 16' 33.24"	33° 46' 25.36"	194	73° 18' 53.04"	33° 46' 24.28"
37	73° 16' 33.38"	33° 46' 28.37"	195	73° 18' 52.90"	33° 46' 25.65"
38	73° 16' 33.51"	33° 46' 31.48"	196	73° 18' 52.56"	33° 46' 28.06"
39	73° 16' 33.68"	33° 46' 35.25"	197	73° 18' 53.81"	33° 46' 28.74"
40	73° 16' 33.87"	33° 46' 39.49"	198	73° 18' 55.17"	33° 46' 31.54"
41	73° 16' 34.03"	33° 46' 43.09"	199	73° 18' 54.26"	33° 46' 34.46"
42	73° 16' 36.79"	33° 46' 44.76"	200	73° 18' 54.10"	33° 46' 34.80"
43	73° 16' 39.10"	33° 46' 46.16"	201	73° 18' 52.70"	33° 46' 35.94"
44	73° 16' 42.26"	33° 46' 48.08"	202	73° 18' 52.65"	33° 46' 36.25"
45	73° 16' 45.06"	33° 46' 49.78"	203	73° 18' 53.06"	33° 46' 37.66"
46	73° 16' 48.14"	33° 46' 51.65"	204	73° 18' 54.88"	33° 46' 40.59"
47	73° 16' 53.27"	33° 46' 53.83"	205	73° 18' 52.28"	33° 46' 44.86"
48	73° 16' 57.12"	33° 46' 55.46"	206	73° 18' 49.76"	33° 46' 49.01"
49	73° 17' 00.98"	33° 46' 57.10"	207	73° 18' 48.53"	33° 46' 49.70"
50	73° 17' 04.82"	33° 46' 58.73"	208	73° 18' 46.66"	33° 46' 51.51"
51	73° 17' 08.63"	33° 47' 00.34"	209	73° 18' 44.16"	33° 46' 52.96"
52	73° 17' 11.62"	33° 47' 02.02"	210	73° 18' 41.34"	33° 46' 54.59"
53	73° 17' 14.72"	33° 47' 04.00"	211	73° 18' 39.74"	33° 46' 54.96"
54	73° 17' 17.37"	33° 47' 05.69"	212	73° 18' 36.72"	33° 46' 54.51"
55	73° 17' 20.12"	33° 47' 07.45"	213	73° 18' 32.99"	33° 46' 53.94"
56	73° 17' 23.24"	33° 47' 09.44"	214	73° 18' 31.95"	33° 46' 54.07"

57	73° 17' 26.11"	33° 47' 11.27"	215	73° 18' 28.47"	33° 46' 56.28"
58	73° 17' 29.58"	33° 47' 13.80"	216	73° 18' 25.71"	33° 46' 58.03"
59	73° 17' 32.42"	33° 47' 15.87"	217	73° 18' 23.44"	33° 46' 59.47"
60	73° 17' 34.98"	33° 47' 17.74"	218	73° 18' 20.92"	33° 46' 59.70"
61	73° 17' 37.56"	33° 47' 20.05"	219	73° 18' 17.43"	33° 47' 00.89"
62	73° 17' 40.57"	33° 47' 22.10"	220	73° 18' 16.97"	33° 47' 00.82"
63	73° 17' 42.71"	33° 47' 23.55"	221	73° 18' 15.68"	33° 46' 59.25"
64	73° 17' 44.55"	33° 47' 24.81"	222	73° 18' 13.65"	33° 46' 57.46"
65	73° 17' 47.04"	33° 47' 27.26"	223	73° 18' 10.31"	33° 46' 57.32"
66	73° 17' 48.62"	33° 47' 28.39"	224	73° 18' 06.53"	33° 46' 57.16"
67	73° 17' 47.46"	33° 47' 29.93"	225	73° 18' 02.21"	33° 46' 56.98"
68	73° 17' 46.02"	33° 47' 31.84"	226	73° 17' 59.46"	33° 46' 57.19"
69	73° 17' 44.61"	33° 47' 33.73"	227	73° 17' 57.58"	33° 46' 56.91"
70	73° 17' 42.97"	33° 47' 35.92"	228	73° 17' 53.88"	33° 46' 56.10"
71	73° 17' 42.62"	33° 47' 38.60"	229	73° 17' 49.60"	33° 46' 55.16"
72	73° 17' 42.27"	33° 47' 41.25"	230	73° 17' 46.03"	33° 46' 53.64"
73	73° 17' 41.95"	33° 47' 43.69"	231	73° 17' 42.39"	33° 46' 52.10"
74	73° 17' 44.33"	33° 47' 44.98"	232	73° 17' 38.14"	33° 46' 49.69"
75	73° 17' 47.14"	33° 47' 46.50"	233	73° 17' 35.06"	33° 46' 48.43"
76	73° 17' 49.83"	33° 47' 47.97"	234	73° 17' 31.35"	33° 46' 46.91"
77	73° 17' 52.61"	33° 47' 49.47"	235	73° 17' 32.74"	33° 46' 42.21"
78	73° 17' 54.19"	33° 47' 50.89"	236	73° 17' 33.75"	33° 46' 39.44"
79	73° 17' 56.07"	33° 47' 52.58"	237	73° 17' 34.93"	33° 46' 36.21"
80	73° 17' 58.29"	33° 47' 54.58"	238	73° 17' 36.51"	33° 46' 31.89"
81	73° 18' 00.63"	33° 47' 56.67"	239	73° 17' 37.44"	33° 46' 28.89"
82	73° 18' 02.30"	33° 47' 58.18"	240	73° 17' 38.60"	33° 46' 25.14"
83	73° 18' 03.74"	33° 47' 59.57"	241	73° 17' 41.00"	33° 46' 20.55"
84	73° 18' 06.24"	33° 48' 01.96"	242	73° 17' 43.62"	33° 46' 20.89"
85	73° 18' 08.62"	33° 48' 04.26"	243	73° 17' 45.73"	33° 46' 20.51"
86	73° 18' 10.93"	33° 48' 06.16"	244	73° 17' 48.37"	33° 46' 19.40"
87	73° 18' 13.56"	33° 48' 08.34"	245	73° 17' 49.60"	33° 46' 17.99"
88	73° 18' 16.21"	33° 48' 09.62"	246	73° 17' 49.68"	33° 46' 15.25"
89	73° 18' 19.15"	33° 48' 11.04"	247	73° 17' 50.82"	33° 46' 14.11"
90	73° 18' 22.43"	33° 48' 12.34"	248	73° 17' 51.10"	33° 46' 12.35"
91	73° 18' 26.30"	33° 48' 13.87"	249	73° 17' 51.50"	33° 46' 11.61"
92	73° 18' 30.28"	33° 48' 15.45"	250	73° 17' 52.64"	33° 46' 10.53"
93	73° 18' 33.23"	33° 48' 14.68"	251	73° 17' 52.53"	33° 46' 08.48"
94	73° 18' 33.77"	33° 48' 13.06"	252	73° 17' 54.29"	33° 46' 06.72"
95	73° 18' 35.84"	33° 48' 13.06"	253	73° 17' 55.26"	33° 46' 06.43"
96	73° 18' 36.43"	33° 48' 12.61"	254	73° 17' 57.08"	33° 46' 05.12"
97	73° 18' 37.15"	33° 48' 10.23"	255	73° 17' 56.29"	33° 46' 02.01"
98	73° 18' 37.78"	33° 48' 09.73"	256	73° 17' 55.68"	33° 45' 59.57"
99	73° 18' 39.53"	33° 48' 06.99"	257	73° 17' 54.07"	33° 45' 56.73"
100	73° 18' 39.85"	33° 48' 05.32"	258	73° 17' 52.27"	33° 45' 53.53"
101	73° 18' 39.67"	33° 48' 01.59"	259	73° 17' 51.10"	33° 45' 51.44"
102	73° 18' 39.58"	33° 48' 00.82"	260	73° 17' 49.73"	33° 45' 49.02"
103	73° 18' 38.68"	33° 47' 59.61"	261	73° 17' 47.34"	33° 45' 47.72"
104	73° 18' 39.08"	33° 47' 57.94"	262	73° 17' 44.72"	33° 45' 46.30"
105	73° 18' 39.04"	33° 47' 56.50"	263	73° 17' 41.38"	33° 45' 44.49"
106	73° 18' 41.50"	33° 47' 53.20"	264	73° 17' 39.00"	33° 45' 43.19"
107	73° 18' 43.12"	33° 47' 51.63"	265	73° 17' 33.59"	33° 45' 43.27"
108	73° 18' 44.70"	33° 47' 50.73"	266	73° 17' 29.64"	33° 45' 42.30"
109	73° 18' 48.70"	33° 47' 50.01"	267	73° 17' 27.03"	33° 45' 40.90"
110	73° 18' 50.73"	33° 47' 48.16"	268	73° 17' 24.91"	33° 45' 38.14"
111	73° 18' 51.22"	33° 47' 46.99"	269	73° 17' 28.19"	33° 45' 35.25"
112	73° 18' 52.66"	33° 47' 45.27"	270	73° 17' 30.83"	33° 45' 29.52"
113	73° 18' 54.91"	33° 47' 44.01"	271	73° 17' 34.21"	33° 45' 27.94"
114	73° 18' 56.89"	33° 47' 43.24"	272	73° 17' 39.05"	33° 45' 25.68"

115	73° 19' 00.83"	33° 47' 41.14"	273	73° 17' 43.64"	33° 45' 23.98"
116	73° 19' 03.80"	33° 47' 40.96"	274	73° 17' 47.55"	33° 45' 23.30"
117	73° 19' 04.07"	33° 47' 40.65"	275	73° 17' 42.53"	33° 45' 19.95"
118	73° 19' 02.40"	33° 47' 38.21"	276	73° 17' 39.80"	33° 45' 18.57"
119	73° 19' 02.31"	33° 47' 36.07"	277	73° 17' 36.53"	33° 45' 16.90"
120	73° 19' 03.51"	33° 47' 33.67"	278	73° 17' 33.38"	33° 45' 15.30"
121	73° 19' 02.82"	33° 47' 31.35"	279	73° 17' 29.77"	33° 45' 13.92"
122	73° 19' 00.68"	33° 47' 29.90"	280	73° 17' 26.73"	33° 45' 12.76"
123	73° 18' 59.95"	33° 47' 27.42"	281	73° 17' 23.38"	33° 45' 11.48"
124	73° 19' 00.63"	33° 47' 26.02"	282	73° 17' 19.68"	33° 45' 10.06"
125	73° 19' 04.23"	33° 47' 24.58"	283	73° 17' 15.50"	33° 45' 08.00"
126	73° 19' 04.41"	33° 47' 24.09"	284	73° 17' 12.60"	33° 45' 06.21"
127	73° 19' 04.95"	33° 47' 24.40"	285	73° 17' 09.36"	33° 45' 04.22"
128	73° 19' 07.16"	33° 47' 24.04"	286	73° 17' 06.12"	33° 45' 02.22"
129	73° 19' 09.32"	33° 47' 23.55"	287	73° 17' 03.86"	33° 45' 01.15"
130	73° 19' 08.69"	33° 47' 20.94"	288	73° 16' 59.46"	33° 45' 01.18"
131	73° 19' 09.27"	33° 47' 20.85"	289	73° 16' 56.35"	33° 45' 01.20"
132	73° 19' 13.28"	33° 47' 21.93"	290	73° 16' 52.56"	33° 45' 01.23"
133	73° 19' 14.45"	33° 47' 21.34"	291	73° 16' 50.12"	33° 45' 00.44"
134	73° 19' 16.88"	33° 47' 19.95"	292	73° 16' 45.69"	33° 44' 58.19"
135	73° 19' 17.55"	33° 47' 19.14"	293	73° 16' 41.09"	33° 44' 55.85"
136	73° 19' 18.23"	33° 47' 19.23"	294	73° 16' 37.46"	33° 44' 54.00"
137	73° 19' 18.50"	33° 47' 20.98"	295	73° 16' 33.65"	33° 44' 52.53"
138	73° 19' 20.34"	33° 47' 23.28"	296	73° 16' 30.84"	33° 44' 51.45"
139	73° 19' 22.95"	33° 47' 24.94"	297	73° 16' 26.95"	33° 44' 49.96"
140	73° 19' 26.46"	33° 47' 25.62"	298	73° 16' 23.67"	33° 44' 48.70"
141	73° 19' 28.50"	33° 47' 25.36"	299	73° 16' 22.05"	33° 44' 47.82"
142	73° 19' 29.93"	33° 47' 25.53"	300	73° 16' 21.16"	33° 44' 46.83"
143	73° 19' 31.50"	33° 47' 26.25"	301	73° 16' 20.56"	33° 44' 45.10"
144	73° 19' 37.08"	33° 47' 26.79"	302	73° 16' 17.25"	33° 44' 44.96"
145	73° 19' 38.12"	33° 47' 24.76"	303	73° 16' 16.65"	33° 44' 45.57"
146	73° 19' 40.73"	33° 47' 21.48"	304	73° 16' 16.94"	33° 44' 46.45"
147	73° 19' 43.38"	33° 47' 17.25"	305	73° 16' 18.26"	33° 44' 48.05"
148	73° 19' 44.46"	33° 47' 16.30"	306	73° 16' 19.48"	33° 44' 53.85"
149	73° 19' 45.45"	33° 47' 14.55"	307	73° 16' 20.30"	33° 44' 56.08"
150	73° 19' 46.80"	33° 47' 12.75"	308	73° 16' 21.18"	33° 44' 57.53"
151	73° 19' 49.14"	33° 47' 09.01"	309	73° 16' 22.57"	33° 45' 03.13"
152	73° 19' 49.95"	33° 47' 06.76"	310	73° 16' 23.20"	33° 45' 08.82"
153	73° 19' 54.04"	33° 47' 03.55"	311	73° 16' 22.94"	33° 45' 14.99"
154	73° 19' 52.27"	33° 47' 02.44"	312	73° 16' 18.87"	33° 45' 12.97"
155	73° 19' 49.35"	33° 47' 01.31"	313	73° 16' 15.21"	33° 45' 11.17"
156	73° 19' 47.62"	33° 46' 59.06"	314	73° 16' 12.36"	33° 45' 13.36"
157	73° 19' 44.15"	33° 46' 57.46"	315	73° 16' 09.33"	33° 45' 15.68"
158	73° 19' 42.93"	33° 46' 56.51"	316	73° 16' 06.19"	33° 45' 19.97"